

Cultural Places and Spaces 2036

Bunjil Place- City of Casey, Victoria by Louis Mokak and Christine Phillips, FJMT Studio

Evolution 7

Cultural Places and Spaces

Connective City 2036 aims to build on the City's attributes as one of the most diverse communities in Australia. Cultural places and spaces will service and celebrate many cultures, languages, activities and age groups. A diverse range of large, medium and small cultural places and spaces will be established to meet community needs and enhance the lives of all people living and working in the City. This infrastructure is part of a broader network of community infrastructure that includes the Green and Blue Webs.



Cultural places and spaces strengthen social connection between people of diverse cultures, and foster a thriving, dynamic and welcoming community.



A diversity of large, medium and small cultural places and spaces is needed to serve our growing community.

Distinctive and valued cultural places and spaces that support social networks and encourage connection, community expression and healthy lifestyle choices are at the heart of *Connective City 2036*.

Building on the City’s opportunities, cultural places and spaces need to meet not only community needs but also represent a range of different sizes to provide the City’s population with the infrastructure required. *Connective City 2036* recognises three scales of infrastructure: metropolitan, city-shaping and community-supporting:

Metropolitan infrastructure: this draws people from across Greater Sydney, providing unique experiences that entertain, inspire and invite exploration of ideas and activities. The design and setting of these places and spaces takes people out of the everyday by offering space for contemplation, expression, connection and recreation. They can be stand-alone or a cluster of spaces and places that together provide a metropolitan destination. The Chapel Road Precinct provides a cluster of cultural places and spaces that together will deliver metropolitan-scale community infrastructure.

Metropolitan infrastructure identified by the NSW Government, such as Belmore Stadium and Bankstown Velodrome, will be funded and maintained by NSW Government.

City-shaping infrastructure: is key to quality urban living. Investing in high quality community facilities that enhance community wellbeing will embed community needs and aspirations at the core of the City as it grows and changes. Integrating this infrastructure in precincts will occur in the Chapel Road Precinct and the Eastern Lifestyle and Medical Precinct.

Community-supporting infrastructure: provides a focus for suburban and local community activities and events. It provides spaces for small, local events and programs that meet the social, educational, cultural and recreational needs of the community. Enhancing the function of existing facilities will be a key opportunity, particularly for facilities in centres identified for growth.

Transformative metropolitan infrastructure

Several pieces of metropolitan community infrastructure have the potential to shape growth and place civic and community facilities at the heart of urban transformation.

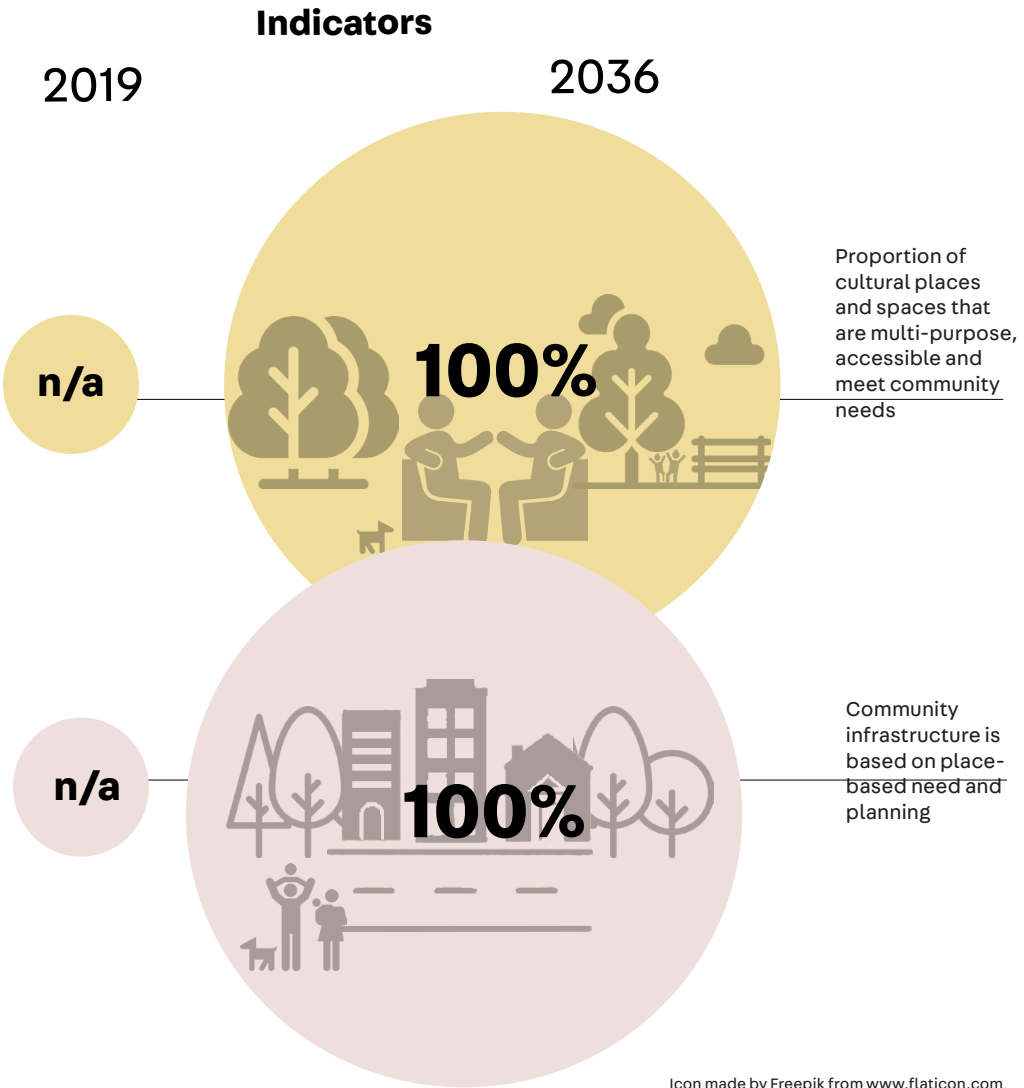
High quality, iconic community facilities will enhance a sense of place and community identity as an area transforms.

In Canterbury-Bankstown metropolitan infrastructure can include the following ideas that are subject to further exploration and investigation:

- Improve the design quality of the proposed new City and South West Metro.
- Expanding the role of the Bankstown Arts Centre, including a new gallery, to raise it to a level commensurate with Bankstown’s role as a strategic centre;
- Implementing the Bankstown Cultural Trail (identified in Bankstown Complete Streets).
- Implementing the Blue Web Actions (Evolution 4);
- Implementing the Green Web actions (Evolution 5);
- Supporting key sporting facilities to enhance their use or transition to new uses where appropriate;
- Creating high quality public domain improvements as part of the Chapel Road Precinct, including public art;
- Exploring shared facilities with education facilities in the Chapel Road Precinct;
- Developing a major new cultural precinct at Campsie; and
- Working with the Australian Government to relocate SBS to Canterbury-Bankstown.

The viability of these items is subject to further investigation over the 20-year timeframe and are not committed.

The City is host to the Dunc Gray Velodrome, the only one of its type in NSW. It is important that the NSW Government support Council in the upkeep of Metropolitan scale infrastructure to ensure they continue to play their important role for sports, arts and culture in NSW.



Casa da Musica - Porto, Portugal by Philippe Ruault, OMA.
Dynamic and imaginative and well constructed architecture improves sense of place and attractive civic places.

City-shaping infrastructure

City-shaping social infrastructure involves planning in creative ways. Planning and delivering city-shaping infrastructure requires a nuanced understanding of contemporary local social conditions and broader social trends, such as the ageing population, rapid digitisation and climate change. Recognising that unexpected events and trends may emerge during the planning horizon, and providing effective city-shaping infrastructure to make room for these wildcard trends to thrive, will be a key part of *Connective City 2036*.

City-shaping infrastructure in Canterbury-Bankstown benefits and leverages the coordinated investment and planning in precincts such as the Chapel Road Precinct and Eastern Lifestyle and Medical Precinct.

Connective City 2036 includes investigation of the viability of the following high-level ideas within the lifetime of this plan:

- Locations for cultural and creative infrastructure within Campsie Town Centre;
- Expanded and enhanced community facilities to build on vibrant centres that are already cultural destinations; and
- High quality public domain, including public art, in the Eastern Lifestyle and Medical Precinct and growth centres.

The viability of these items is subject to further investigation over the 20-year timeframe and are not currently committed until further investigation into detailed viability is carried out.

The City is host to key city-shaping infrastructure, such as Belmore Sports Ground, a 10,000 seat capacity rectangular stadium, and Memorial Oval, a premium cricket oval. These facilities play important roles in attracting people to the City, but also in activating surrounding centres.

Focus on delivery in growth centres and precincts to support sustainable growth

Improved uses of community, leisure and aquatic infrastructure supports socially sustainable growth in line with the demographic profile and population projected to be living and working in the City's 34 centres.

Revitalisation of facilities as part of a holistic approach to urban renewal will maximise the value of the urban transformation in the Chapel Road Precinct and the Eastern Lifestyle and Medical Precinct.

Many other centres already include existing community facilities that could be better integrated into the urban fabric to enhance character and activation, while diversifying the range of activities.

Community-supporting infrastructure

Community-supporting infrastructure includes integrated multipurpose facilities, local community halls and meeting spaces, district libraries, child care centres, and cultural and creative facilities.

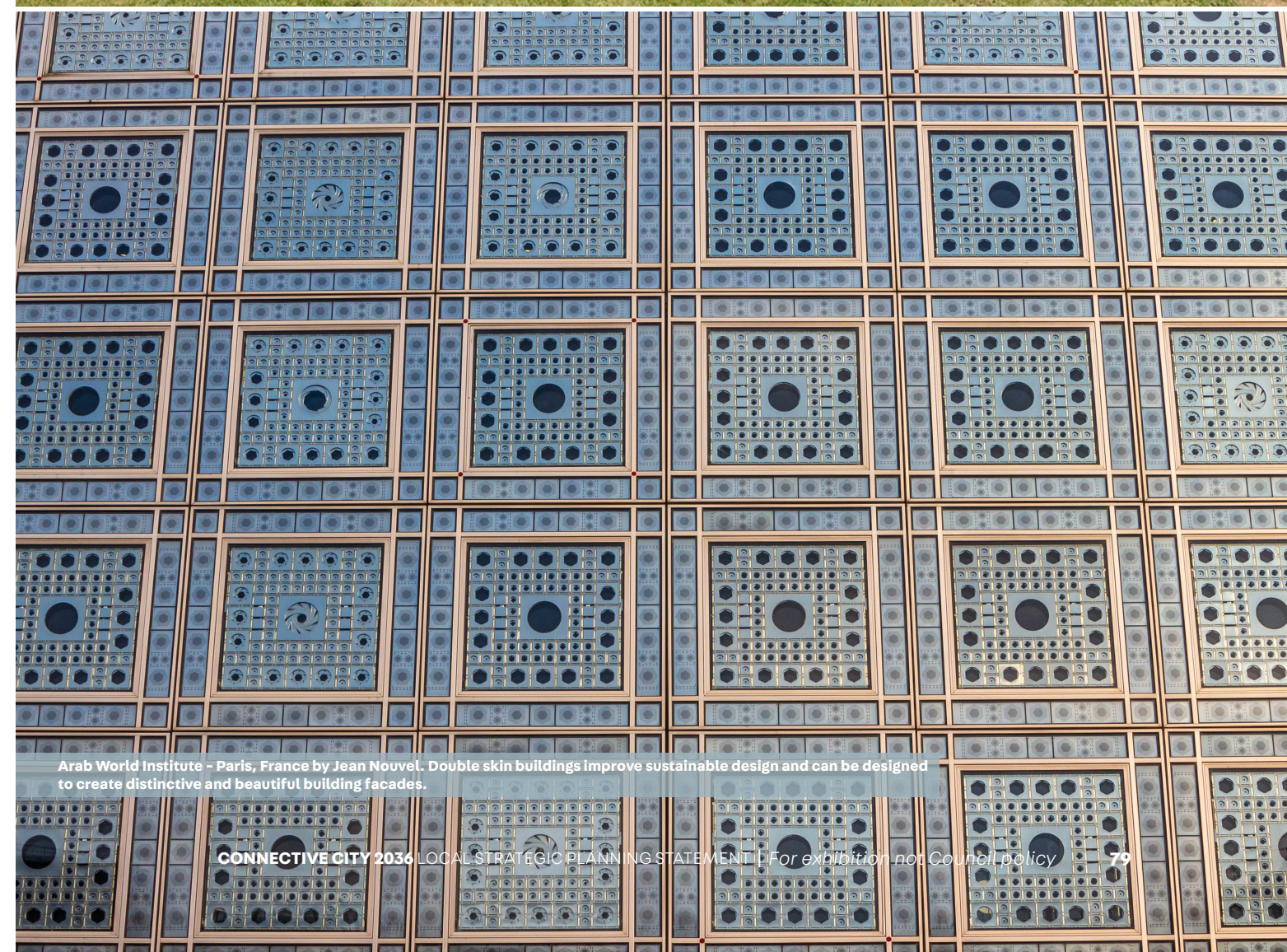
Although some of these facilities may be underutilised in the short and medium term, there is potential to explore transitional and pop-up uses that activate these facilities for local communities, and to review their function and use.

A high level supply and demand analysis completed to inform *Connective City 2036* suggests that to ensure an equitable and accessible spread of community-supporting infrastructure, each catchment area should have at least one integrated multipurpose facility; community spaces within local community centres or as part of other development; access to district or higher level libraries; and access to cultural and creative facilities.

The analysis provided the following directions that will be examined in more detail as places grow and change.



Open space and community facilities need to be adaptable to events of various scales.



Arab World Institute - Paris, France by Jean Nouvel. Double skin buildings improve sustainable design and can be designed to create distinctive and beautiful building facades.



Places and spaces will allow for understanding, expression and recognition of Aboriginal cultural heritage.

Retain community facilities but make them work harder

Several legacy community facilities reflect service provision models that are no longer current, such as early childhood health clinics, senior citizens' centres and scout and guide halls. Other facilities are based on historic patterns of development and suburban delivery models which are no longer fit for purpose – for example, some facilities are isolated from public transport but have large parking areas. Some of these facilities are under-utilised, of varying quality, and create maintenance, renewal and planning challenges.

Enhance the effectiveness of existing facilities

Through new operating models such as partnering with community based organisations to manage some facilities and services (e.g. youth services group) could be given management responsibilities in exchange for facilities.

There may be temporary and low impact activations that will activate facilities at limited cost to Council, such as co-working spaces.

Improve prosperity and equity through investment priorities

Cultural places and spaces support social inclusion and equity by providing accessible, affordable facilities, places and services. The City's network of community facilities includes affordable early childhood education and care services, facilities and programs for young people and older people, opportunities for education and lifelong learning (including in Council's libraries) and access to technology

Community facilities act as catalysts for local economic development, creativity and enterprise by providing work spaces that support emerging businesses. There may be opportunities to develop economic development spaces linked to enterprise corridors and economic centres throughout the City – for example, co-working spaces, maker-spaces and social enterprise start-up hubs. Other facilities, such as libraries, could be used by local entrepreneurs as workspaces, or for meetings.

Community facilities also support residents experiencing disadvantage by providing a physical location for local services and programs. For example, the City includes several migrant resource centres and youth centres.

Other organisations in the City provide spaces for hire, such as sports clubs and RSL Clubs. Council will also continue to provide affordable and accessible spaces that include all community members, regardless of income.

Leisure and aquatic infrastructure

Trends in the use of leisure and aquatic facilities show that many now incorporate other uses, such as allied health services to create health and fitness hubs, or cafes and social spaces. The use of new technologies assists with access to spaces and programming, and there are opportunities for centres to be multipurpose, including other types of spaces that the community can use.

As the community grows there will be shifts in participation in recreation and leisure activities that may require a shift in Council's role and provision of infrastructure. In some cases, we will broaden the flexibility of certain facilities, or better integrate them with their surroundings; in other cases we may be transitioning the use to better reflect current participation in certain sporting codes or other trends.

As with community infrastructure, many facilities will be getting to the end of their usable life and new facilities, or consolidated facilities elsewhere, will be investigated.

Partnerships with other providers

The City's many schools offer opportunities for us to collaborate with agencies like the NSW Department of Education and local private schools to increase access to school facilities – in particular meeting spaces, arts and cultural facilities and open space and sporting facilities.

We have established an effective working relationship with the NSW Department of Education to deliver joint and shared use projects across the City (e.g. Chester Hill Neighbourhood Centre). This work provides a foundation for future opportunities.

The City's large RSL and sports clubs, including Bankstown Sports Club, already provide for the community; we will consider opportunities to harness further capacity through partnership arrangements.

Facilities for a culturally diverse community

Cultural places and spaces strengthen social connections between people of diverse cultures, and foster a thriving, dynamic and welcoming community. Community facilities provide spaces for local programs and services, English language classes, cultural and community groups – as well as informal meeting spaces and events that enable residents to build community and place-based connections.

Cultural and creative facilities also showcase and celebrate the diversity of the community. Existing facilities in the City that reflect the cultural richness of the community include women's rest centres and health centres. Other facilities are frequently booked by prayer groups and other religious and cultural organisations.

Community facilities will need to continue to be inclusive of all people, as well as culturally sensitive, to encourage the social and civic participation of all residents. Facilities help to build cross-cultural and intergenerational understanding and trust, as well as individual and community wellbeing.

Affordable spaces for community services providers

As commercial rents increase in association with new development and renewal and revitalisation of local centres, there is a risk that existing community services could be displaced. The City includes a relatively high proportion of people who experience disadvantage, as well as a high number of recently arrived immigrants and refugees. These people require community services, which in turn require affordable floor space.

Low cost, leasable office space for not-for-profits will help community service providers to provide services. We will explore opportunities to temporarily lease under-utilised spaces to community service providers as they become established.

Flexible, adaptable spaces

More flexible and adaptable spaces in existing local facilities would meet contemporary provision models that cater to a range of community needs.

Community space should be flexible to changes in ways of living and working within the community. The need for multipurpose spaces should be balanced with the need for purpose-built spaces for specific uses such as galleries and exhibition spaces.

Recognising these facilities as part of a network will recognise the relative strengths of particular facilities to avoid duplication of services while making a range of spaces available.

Greater understanding and recognition of our indigenous cultural places and spaces across the City

Council acknowledges the prior occupation of the land by the Darug and the Eora peoples and will seek opportunities to recognise Aboriginal and Torres Strait Islander heritage through physical features of the City and by supporting community cultural activities. In a spatial context this is about understanding indigenous story lines across the City, the significance of physical elements - rivers, landforms, sites of conflict, sites of recognition - reflecting the cultural memory of the landscape and the history of our first peoples.

Council commits to a greater understanding and recognition of our indigenous cultural places and spaces across the City and will develop a City-wide Indigenous Cultural Heritage Study that will inform the New Planning Framework and future reviews of *Connective City 2036*.

EVOLUTION 7 - CULTURAL PLACES AND SPACES							
	PRIORITY	ACTIONS	CBCITY2028	SOUTH DISTRICT PLAN	COLLABORATION	RESPONSIBILITY	TIME FRAME
METROPOLITAN	Deliver metropolitan-scale cultural spaces and places in Bankstown City Centre	Investigate feasibility and location of a new metropolitan scale cultural facility in the Bankstown CBD as part of the Bankstown Collaboration process			GSC, CreateNSW, Sydney Metro, TfNSW, Sydney Water, DPIE	GSC	
	Deliver metropolitan-scale cultural spaces and places in Campsie Town Centre	Community engagement informs the development of new cultural places and spaces in strategic centres			GSC, CreateNSW, Sydney Metro, TfNSW, Sydney Water, DPIE	CBC	
	Provide inspiring and city defining cultural places and spaces	New metropolitan-scale cultural places and spaces are well-funded and subject of an integrated design review process			CreateNSW	CBC	
	Integrate the community's individuality to create welcoming and culturally appropriate places and spaces	Community engagement informs the development of new cultural places and spaces in strategic centres				CBC	
	Commit to greater understanding and recognition our Indigenous Cultural Places and Spaces across the City	Develop and deliver a City-wide indigenous cultural heritage study			CreateNSW, Metropolitan Land Councils	CBC	
CITY SHAPING	Match community infrastructure size and type with centre size and type	Community infrastructure provision to be informed by agreed centres hierarchy and any place-based plans developed for centres			DPIE	CBC	
	Provide a diverse range of sizes and types of community infrastructure	Develop a network approach to the provision of community infrastructure and services			DPIE	CBC, DPIE	
	Achieve a wide range of adaptable and multi-functional places and spaces	Explore opportunities for multipurpose community infrastructure as part of any community infrastructure strategic planning				CBC	
	Achieve socially, environmentally and economically sustainable infrastructure	Explore opportunities for infrastructure that meets triple bottom line outcomes as part of any community infrastructure strategic planning				CBC	
	Shape infrastructure by community participation and partnerships	Advocate for and participate in the delivery of joint-use and shared facilities with relevant agencies, departments and private sector stakeholders			DoE, Office of Sport, DPIE	CBC, DoE	
	Future proof community infrastructure during planning and design phases	Evidence-based community infrastructure planning informs all place-based plans, strategies or planning proposals. Develop a Community Facilities Strategy that promotes flexible design and shared use.			DoE, Office of Sport, DPIE	CBC, DPIE	
	Support temporary activation of vacant or poorly-used community infrastructure	Simplify processes for temporary uses on public and private land			Sydney Trains	CBC	

· Delivery: By 2021 (0–2 years) By 2021 and 2024 (2–5 years) Beyond 2025 (more than 5 years)

South District Plan Directions: Please refer to pages 13-15.

CBCity2028 Transformations: Please refer to pages 13-15.