

STAGE 1

HURLSTONE PARK COMMUNITY SPACE

TO BE BUILT 2021

A PAVILION IN THE PARK

Canterbury Bankstown Council will deliver a new Community Space Building in 2021. This building will provide the community of Hurlstone Park with a **a diverse and inclusive community hub**, which is flexible in use and sited to respond to the past and present heritage, environmental constraints of the site and future sustainability initiatives of Council and community.

The proposed building is robust and durable, providing the community with a much needed place for gathering. The building is conceived of as a pavilion in the park, providing not only refuge within but activating surrounds providing community with a **building that acts “in the round”**. The building seeks to enhance possibilities for multiple use zones, retention of views and above all provide a building which is accessible for all and which enhances safety through passive surveillance so that the park is inclusive for all.

While it is intended that the main functional spaces will be available to the community on a hire basis, **the building is sited and formed to maintain benefit for the whole of community at any given time**. The proposed building and associated master plan has been developed to respond received community feedback - we have listened.

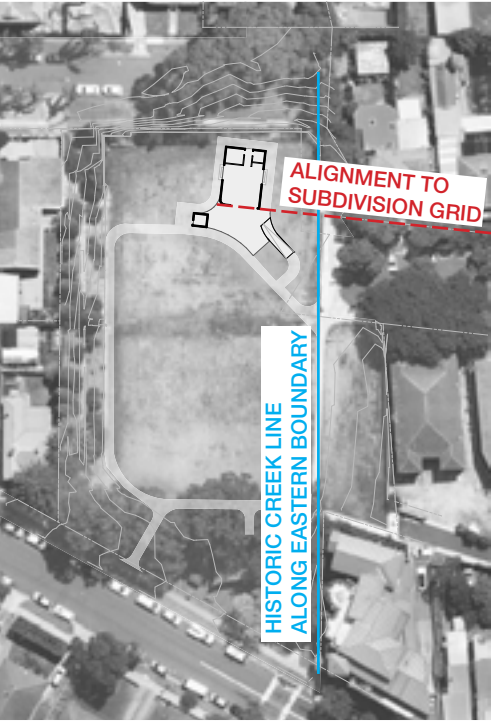


DESIGN PRINCIPLES

1. SITING STRATEGY

Siting the building in the northern portion of the site locates the building away from key environmental constraints and allows for multiple open activity zones.

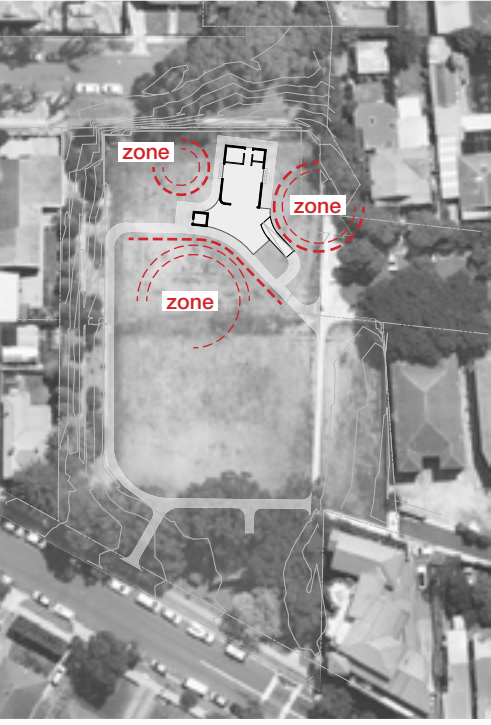
- The building is sited:
- to retain generosity of open space;
 - to retain key views across the park;
 - to key into existing access points into the park;
 - to respond to past and present heritage of the site;
 - to retain privacy to adjacent dwellings;
 - to maximise opportunities for passive surveillance;
 - outside of floodprone zoned land;
 - outside of acid sulfate soil zoned land;
 - clear of known existing underground services.



2. HERITAGE

The rich history of the site and its context should be celebrated, protected and renewed.

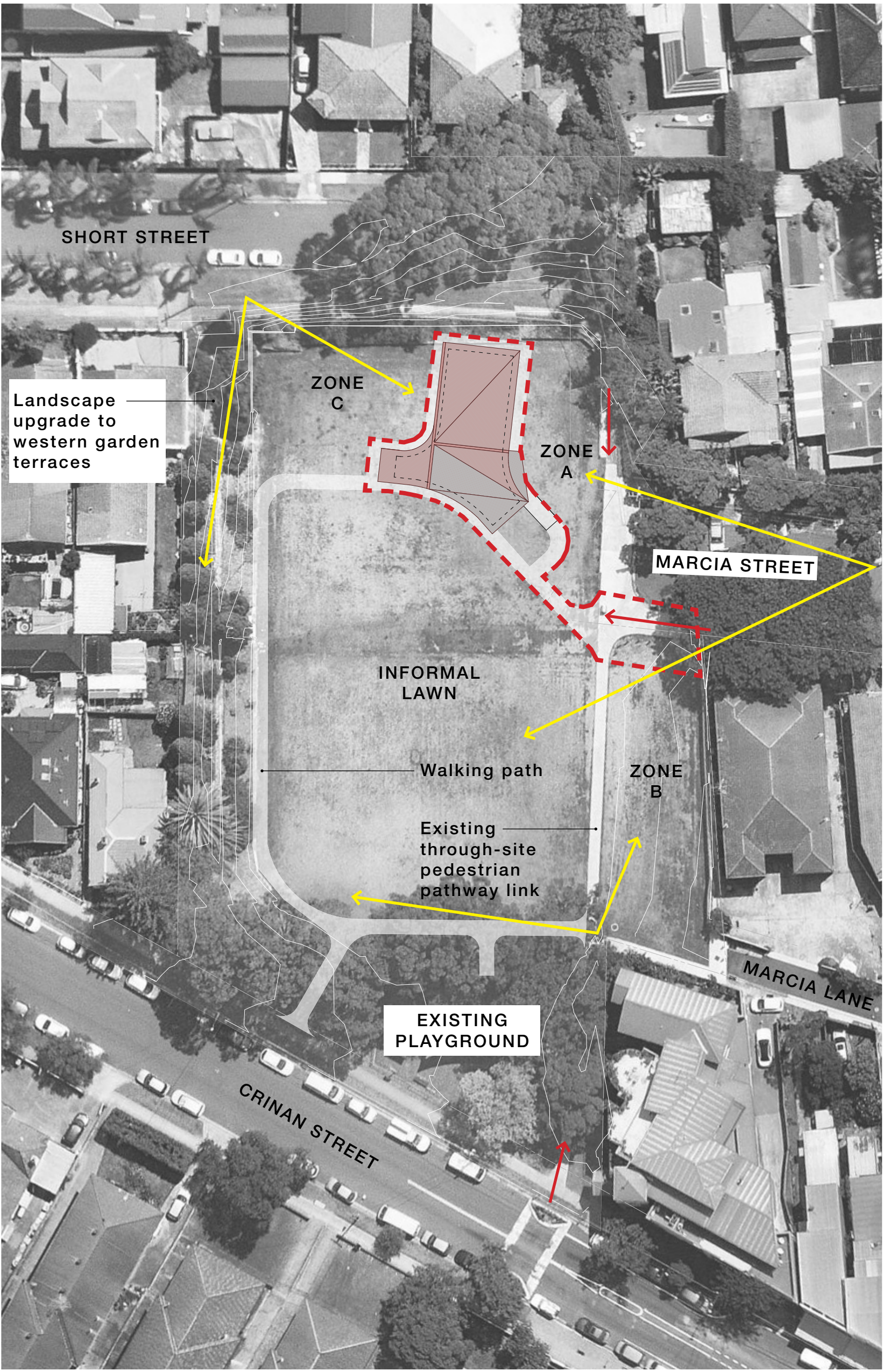
- The building:
- imagines and considers the qualities of this landscape pre-settlement; the creek which once ran along the eastern boundary and its route retained through the historic subdivision grid;
 - imagines the transformation of the landscape through a process of carving; the site was once a quarry;
 - references the path of the old creek and carved landscape through its organic plan form
 - aligns to the subdivision grid of Marcia Street. The form of the roof, materials and colours reference the surrounding and predominant Federation style of Hurlstone Park.



3. PERIPHERAL SPACE ACTIVATION

Community expressed a need for the park to better accommodate multiple uses at any given time.

- The form of the building:
- activates external, adjacent spaces allowing for multiple use overlays;
 - allows for the retention of the central informal lawn for active recreation;
 - results in two smaller open areas in the north western and north eastern corner of the site which can be utilised for smaller active recreation or passive recreation, pending community feedback on the master planning initiatives.



Site Plan - Scale 1:500

- Extent of project works
- Existing Key Access Point
- Existing Key Views



0 25M

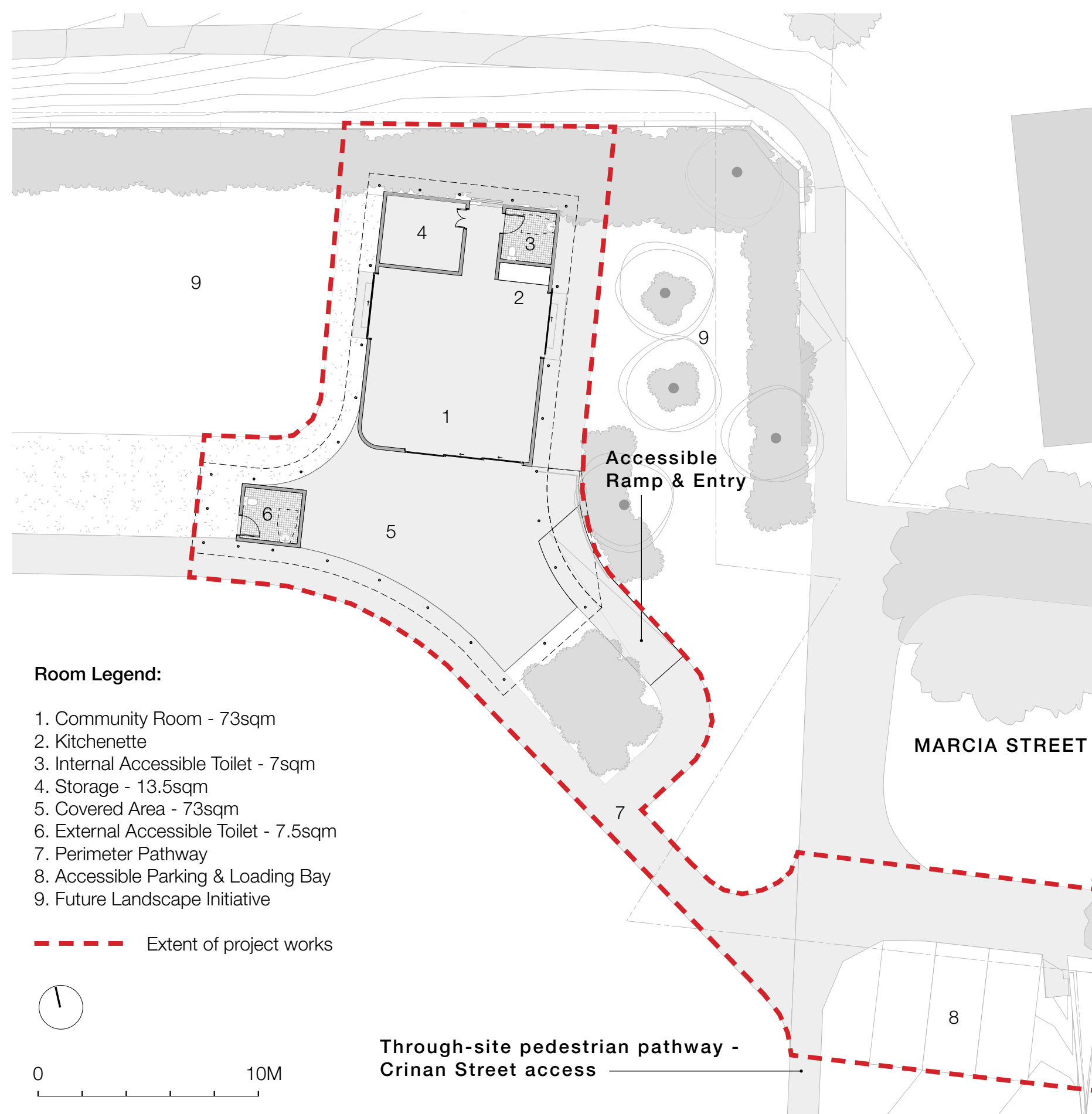


3D Artist's Impression - View from pedestrian footpath access off of Crinan Street, at south eastern corner of site

STAGE 1

HURLSTONE PARK COMMUNITY SPACE

TO BE BUILT 2021



Building Plan - Scale 1:200



3D Artist's Impression - View from Covered Area looking into Community Room and northwestern park corner



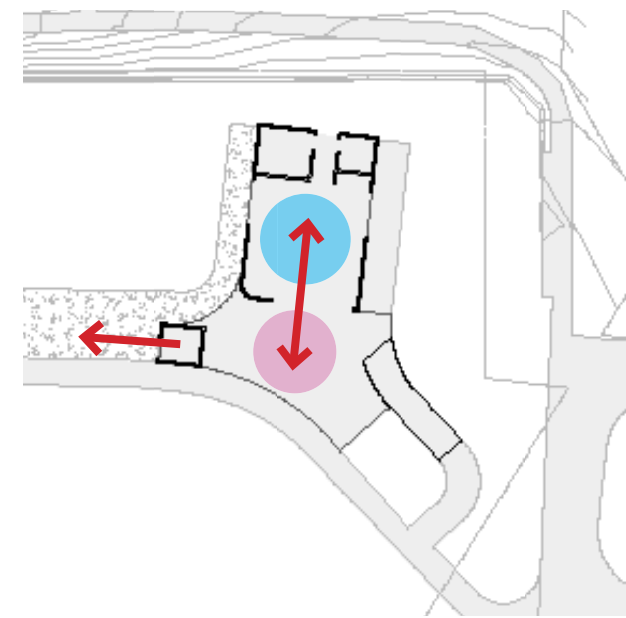
3D Artist's Impression - View from pedestrian footpath access off of Marcia Street, at south eastern corner of site

DESIGN PRINCIPLES

4. FLEXIBILITY IN USE

A successful community building must have flexibility in use.

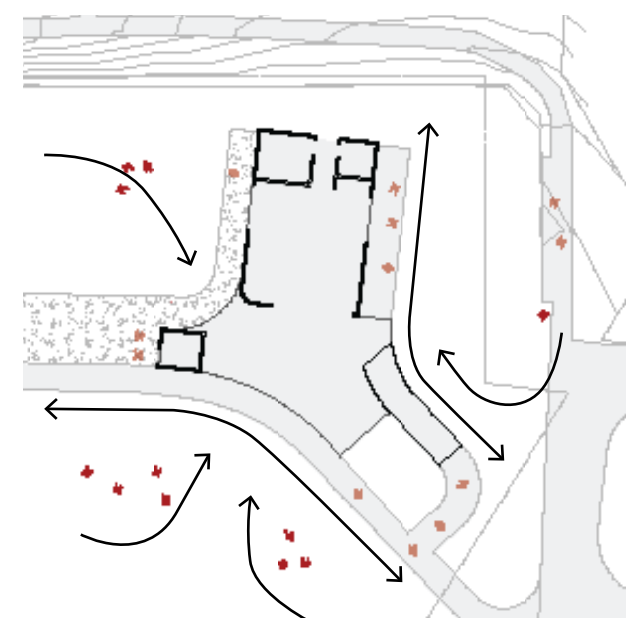
- The configuration of the building plan allows the Community Room and Covered Area to be utilised as a single space or as separate spaces.
- The external accessible toilet is located so that it remains part of the building assemblage but always separate so that it remains welcoming to the public without impacting on the space of hirers.



5. A BUILDING IN THE ROUND

Conceiving of the building as a pavilion allows for access and activity to occur around all edges.

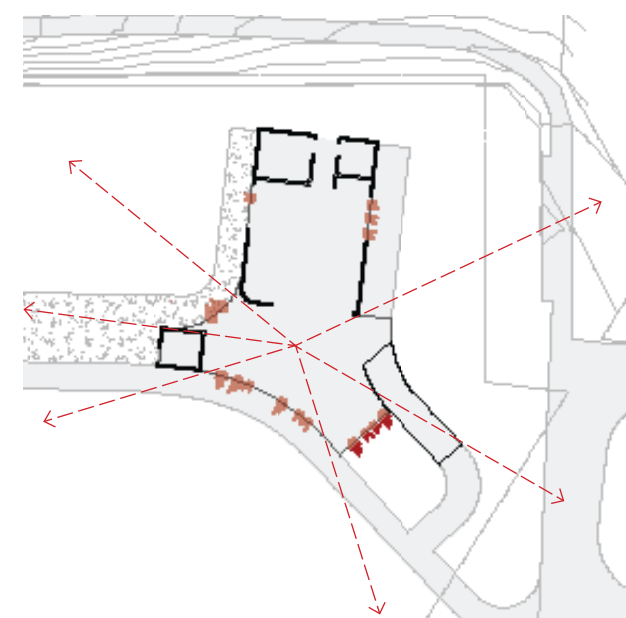
- The building is approachable and afforded multiple physical and visual connections to its park setting;
- The building is sited to retain views through and around at all times to restrict opportunity for anti-social behaviour.



6. REFUGE & PROSPECT

A building within a park should address its setting through retention of views and provide shelter.

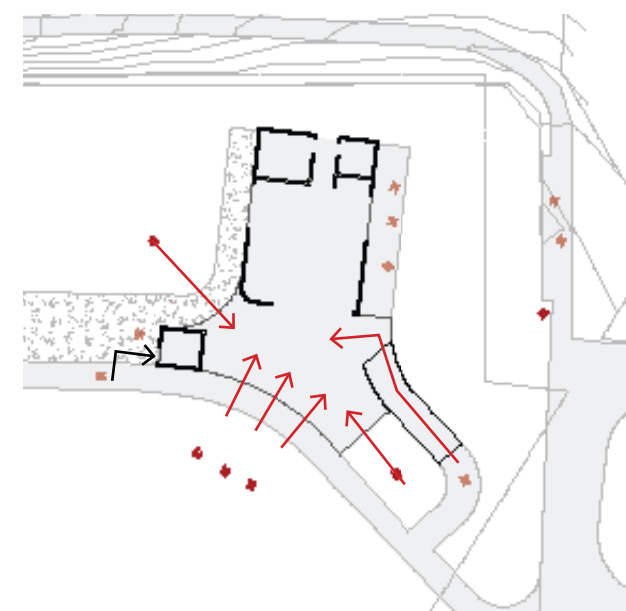
- The building is configured so that views are retained through and across the park;
- By raising the floor of the building the edge can be utilised as a seat which is protected by the overhang



7. ACCESSIBILITY & PUBLIC AMENITY

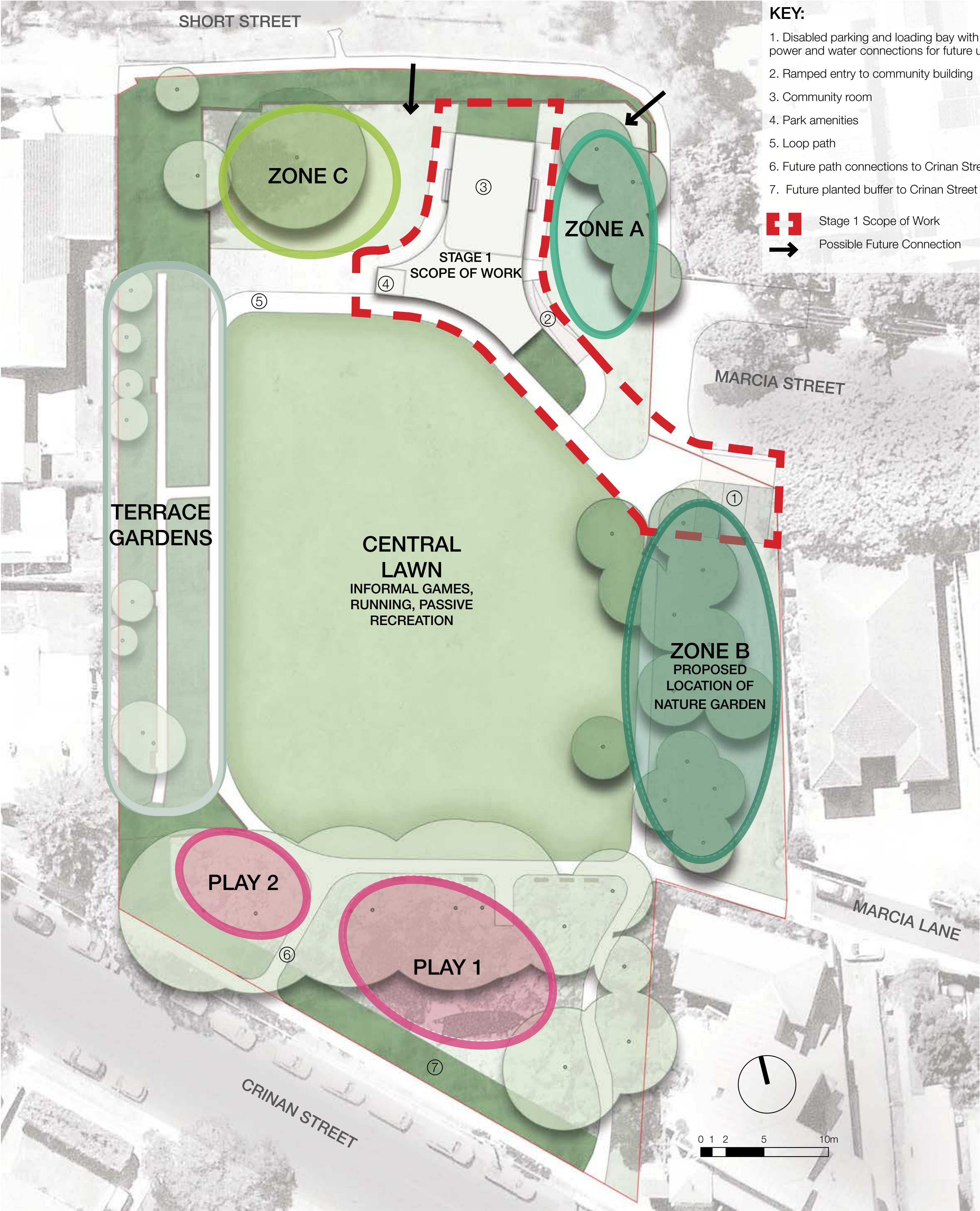
Open buildings facilitate social inclusion.

- The building is configured to allow multiple points of access;
- All spaces of the building are universally accessible: a ramp is provided to the community room and covered area while the external accessible toilet is accessible on-grade to the perimeter pathway.



HURLSTONE MEMORIAL RESERVE PRELIMINARY MASTER PLAN 2021-2041 CONCEPT OPTIONS

A 20 YEAR MASTER PLAN WITH STAGE 1 FUNDED FOR CONSTRUCTION IN 2021



NEW PARK ELEMENTS

PLAY 1



FUTURE WORKS Expanded Play

- Expansion of existing play including wider range of play opportunities
- Enhanced planting & street interface

PLAY 2



FUTURE WORKS Upgraded Play

- Expansion of existing play to the west using topography for play opportunities
- Potential slides and new climbing equipment

TERRACE GARDENS



STAGE 1 MASTERPLAN WORKS

- Revitalisation of planting

FUTURE WORKS

- Restoration of stone walls, paths, steps and seating.

LOOP PATH



FUTURE

- Provision of park loop for walking and children's learn to ride

CENTRAL LAWN



- Informal games, running, passive recreation

DESIGN OPTIONS

ZONE A



Future Community Garden

- Community led initiative
- Plots for edible productive gardens

OR



Future Garden + Seating

- Flexible public seating shaded by trees
- Decorative planting

OR OTHER ...

ZONE B



Future Nature Garden

- Native planting including decorative flowering plants
- Habitat for birds and insect
- Informal gravel paths and seating

OR



Future Tree Grove + Seating

- Flexible public seating shaded by trees
- Mass planting of native grasses and ground covers

OR OTHER ...

ZONE C



Future Gathering Space

- Flexible open space for community use such as children's birthday parties small meetings
- Areas of turf and gravel with seating and large feature shade tree
- Protected semi enclosed space in close proximity to community building

OR



Future Junior Play Garden

- Informal play opportunities for smaller children approx 2-6 years old
- Nature based exploratory play elements
- Large feature shade tree

OR OTHER ...