

ANNEXURE A

**PLATES SHOWING KEY FEATURES OF DEVELOPMENT SITE
UNDER PRE-DEVELOPED CONDITIONS**



Plate 1: Looking east toward the eastern carpark entrance on The Appian Way.



Plate 2: Looking south toward trapped low point in carpark.



Plate 3: Looking north across the western carpark entrance on Fetherstone Street.

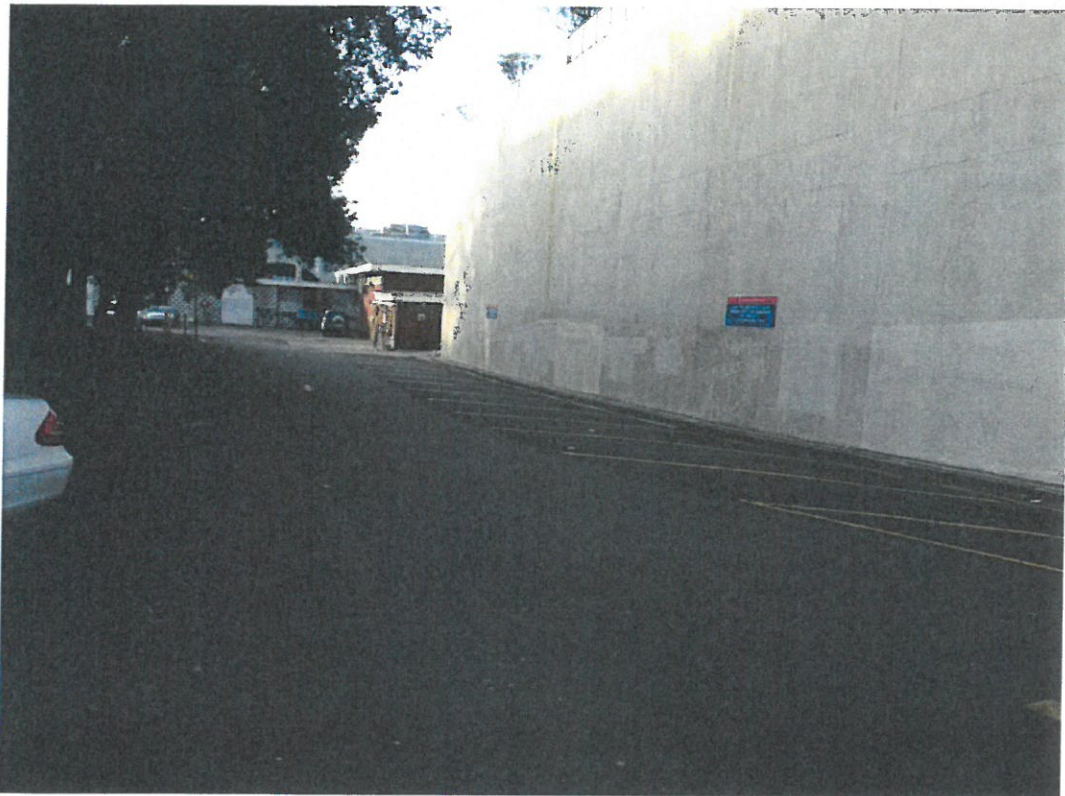


Plate 4: Looking east toward trapped low point in carpark from western carpark entrance on Fetherstone Street.



Plate 5: Looking east along southern footpath of The Mall. Existing garden beds which are located at the intersection of The Mall and The Appian Way are in the centre of the plate.



Plate 6: Looking south from The Mall toward the existing carpark. Existing retaining walls which prevent overland flow from entering the carpark are on the right of the plate.



Plate 7: Looking south along the northern carpark entrance toward the existing carpark. Existing retaining walls which prevent overland flow from entering the carpark are on the right of the plate. Existing raised gardens beds are on the left of the plate

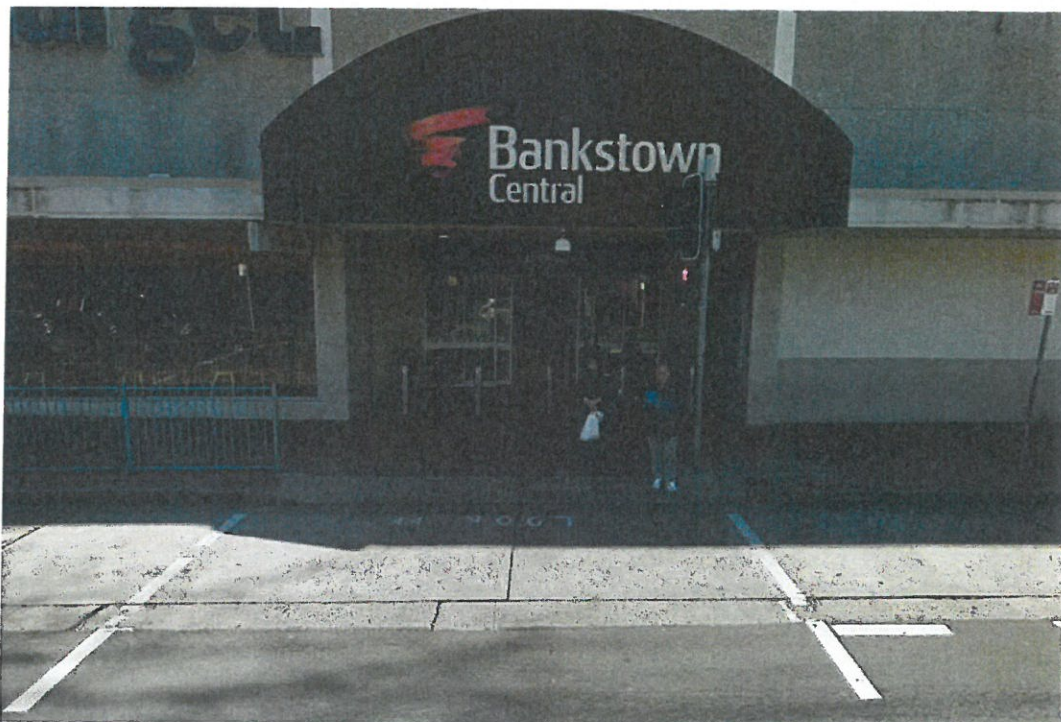


Plate 7: Looking east at The Appian Way entrance to Bankstown Central Shopping Centre. (Source: Google Street View)