



Schematic Design Phase-Interior Narrative Concept 1st August 2019

## The Vision

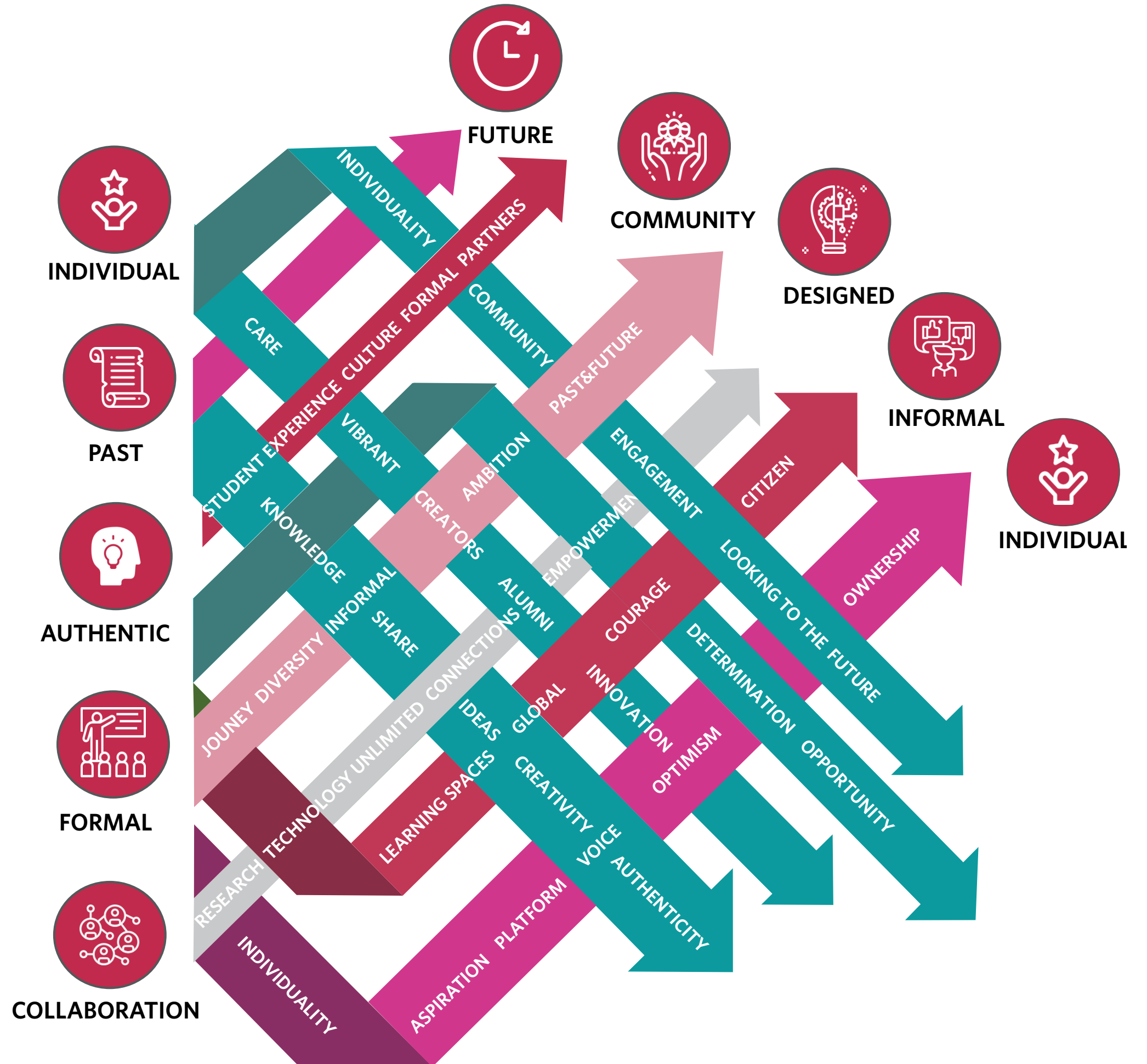
To create a vertical and inclusive learning and research environment that promotes direct engagement between students, staff, other campuses, WSU partners and the Bankstown local community.



## Threading The Ambitions Together

The BCC will embody a complex network of interests and ideas.

The design will reflect the  
dynamic interlacing and weaving  
of this network



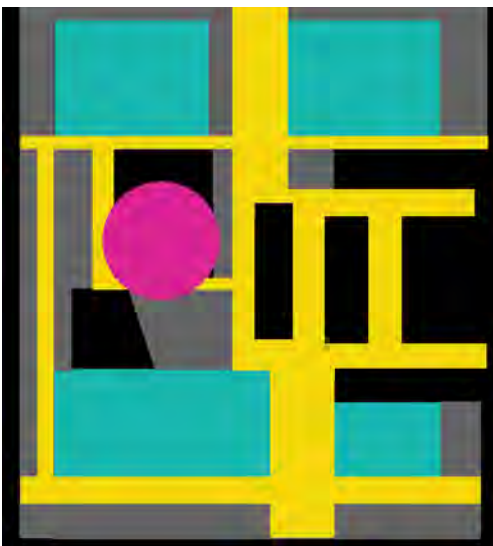
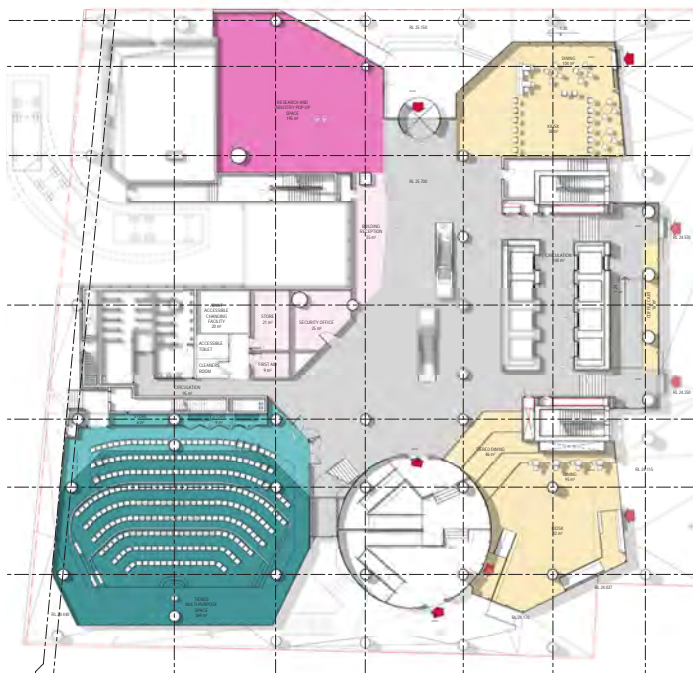
Weaving Spaces

- Circulation
- Learning Spaces
- Public Spaces
- Social Spaces
- Workplace

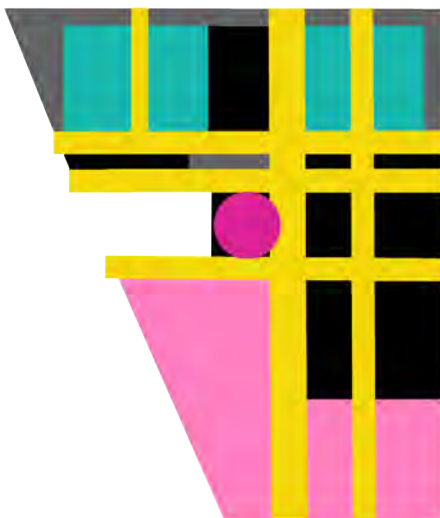
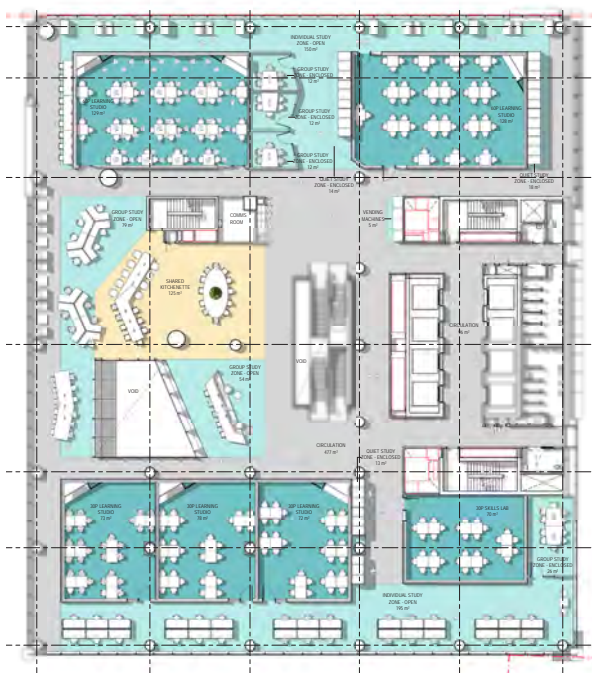
Planning Abstraction



Ground Floor



Level 6

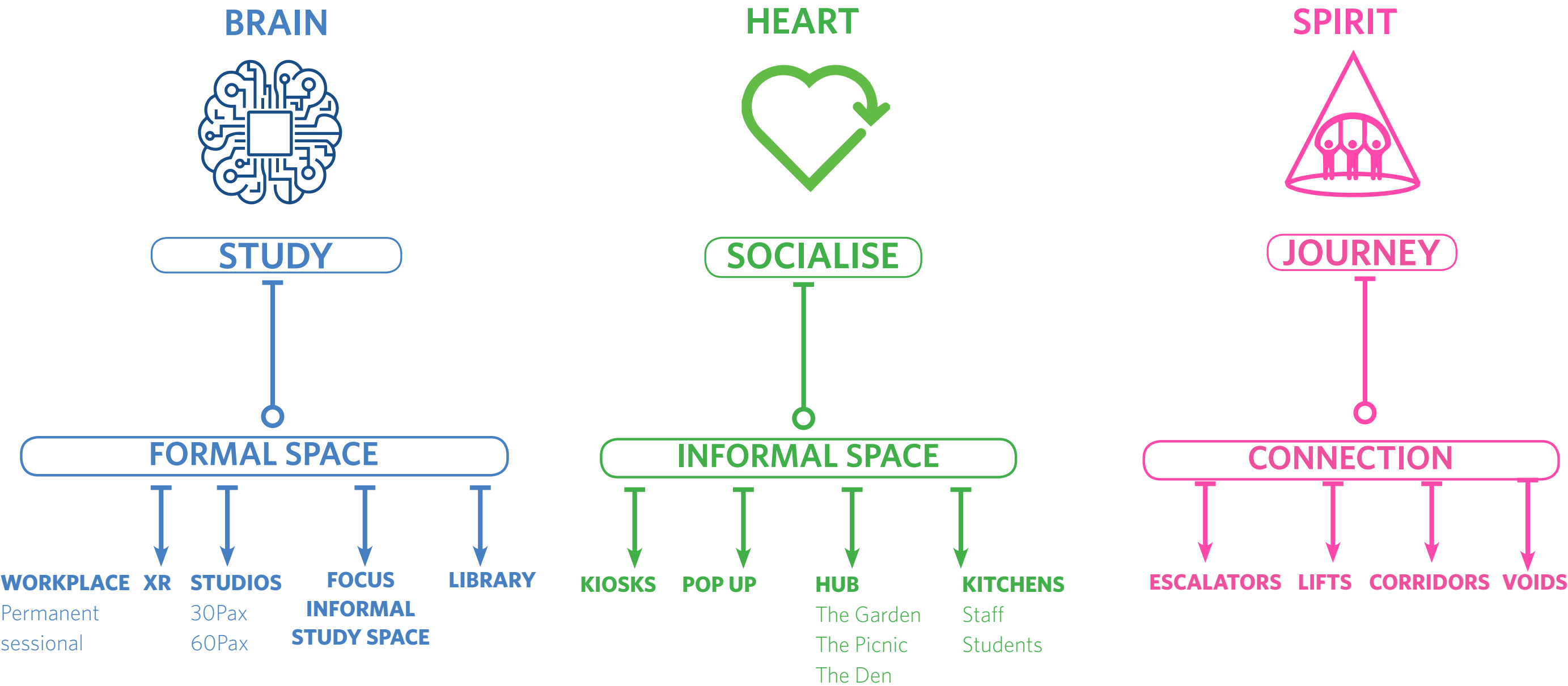


Level 8



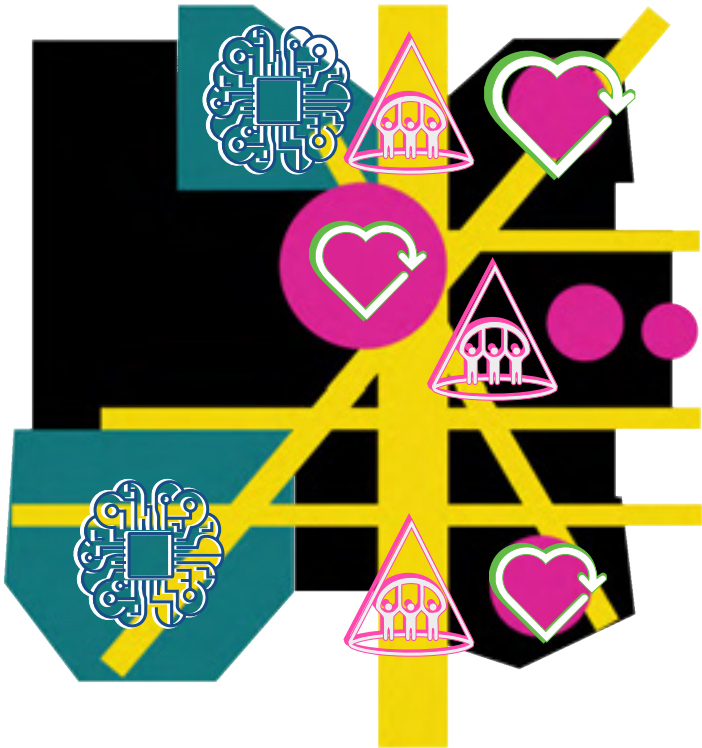


Space Typologies

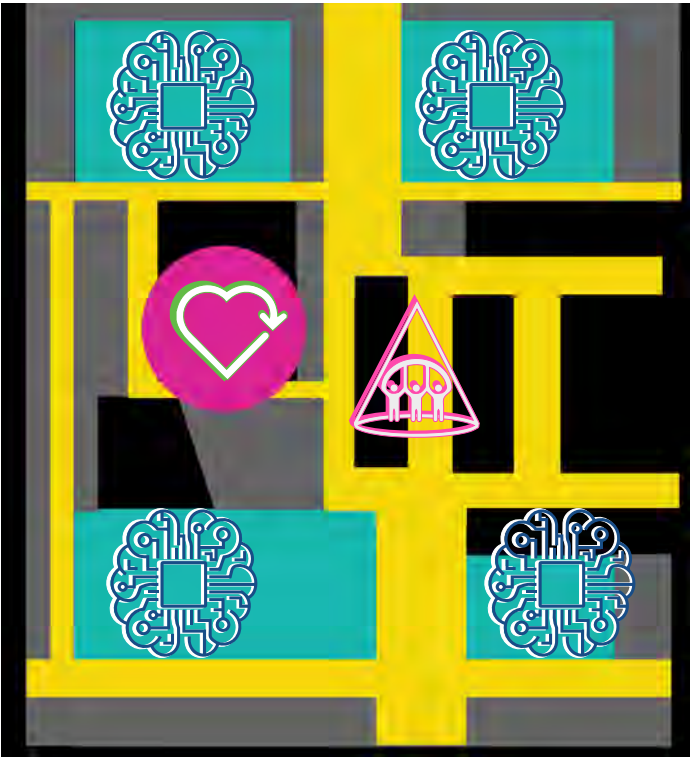


Weaving Spaces  
Space Typology Schematic

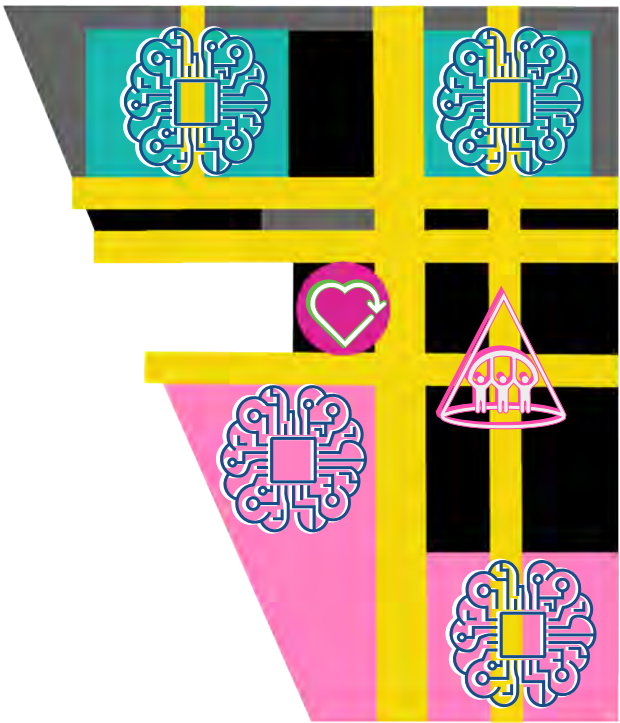
- Circulation
- Learning Spaces
- Public Spaces
- Social Spaces
- Workplace



Ground Floor



Level 6



Level 8

## Connections and Perspectives

- Drawing the connection from the inside to the outside
- Drawing people through the building
- Defining entries
- Underlining the main arteries









Typical Learning Studio



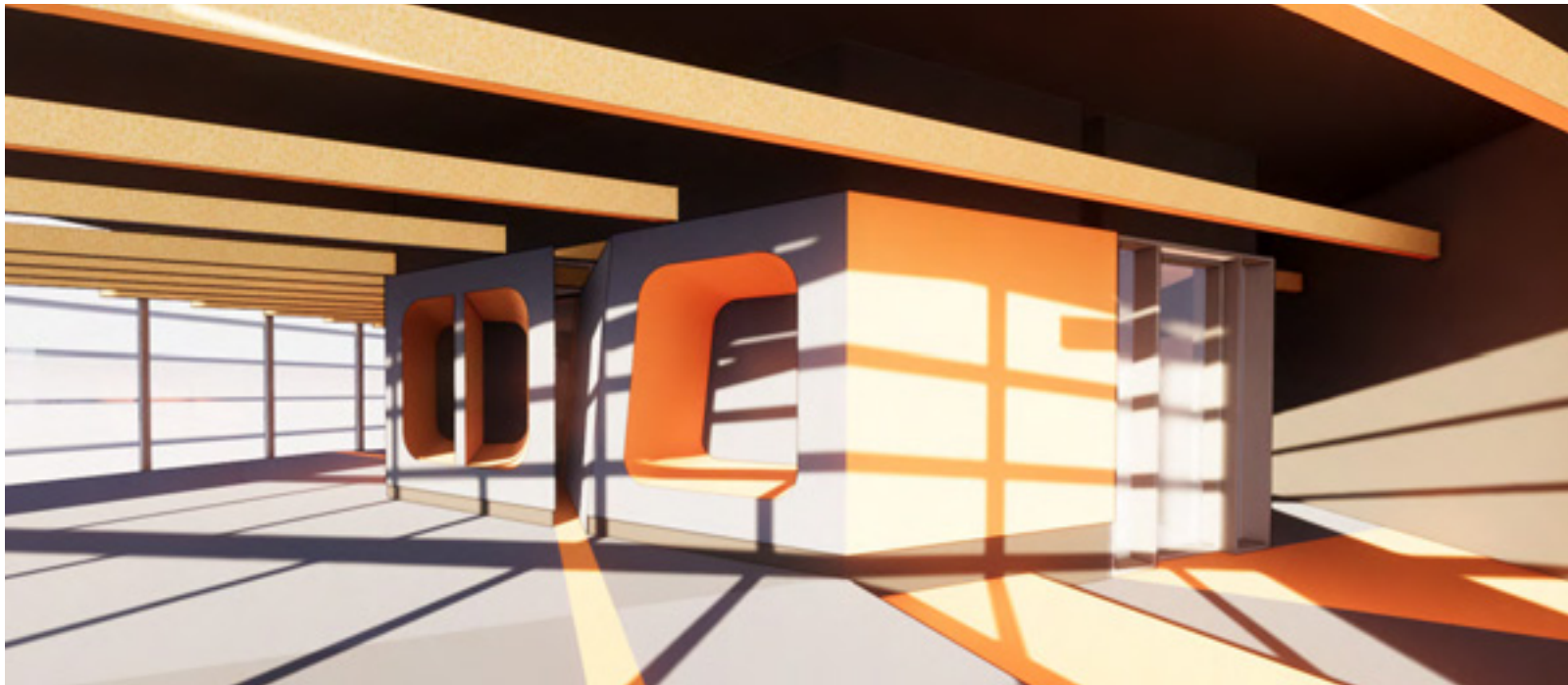


## Typical Learning Studio





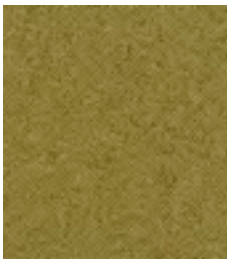
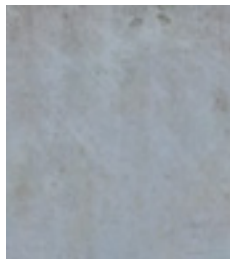
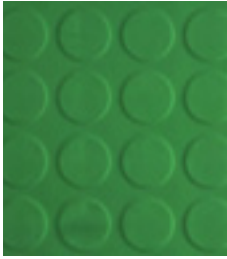
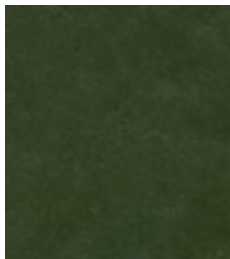
## Typical Learning Studio





# The Student Hub

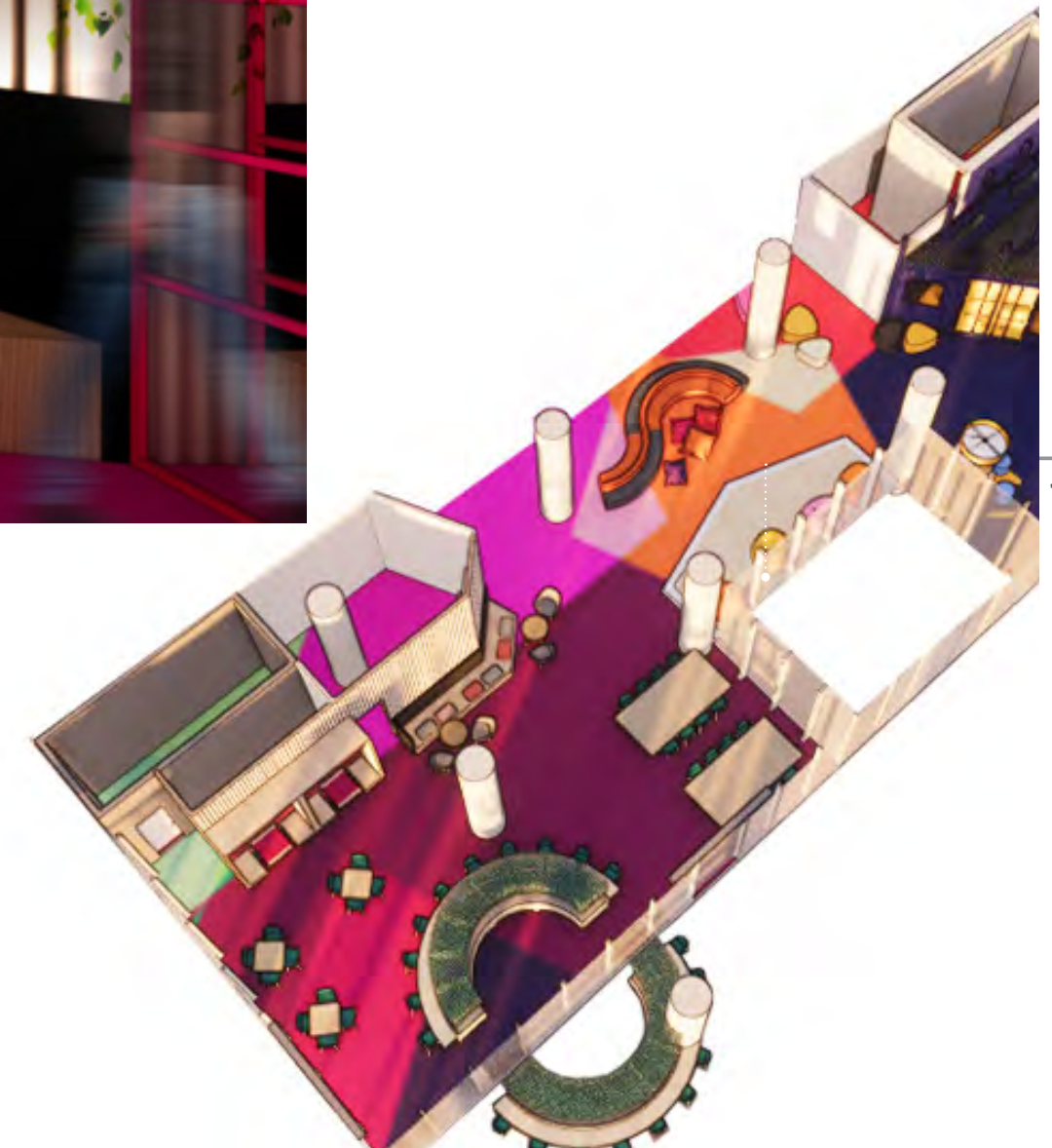
Level 3





# The Student Hub

The Picnic





# The Student Hub

The Garden





# The Student Hub

The Den





## THE KITCHEN TABLE - 'the connector'

### **SOCIAL**

kitchen table

### **Eat**

enjoyment of eating with peers

### **Prepare**

cook your meal

### **LINK**

connect with peers

### **PLAY**

free time

### **RECHARGE**

time out

### **RNEW**

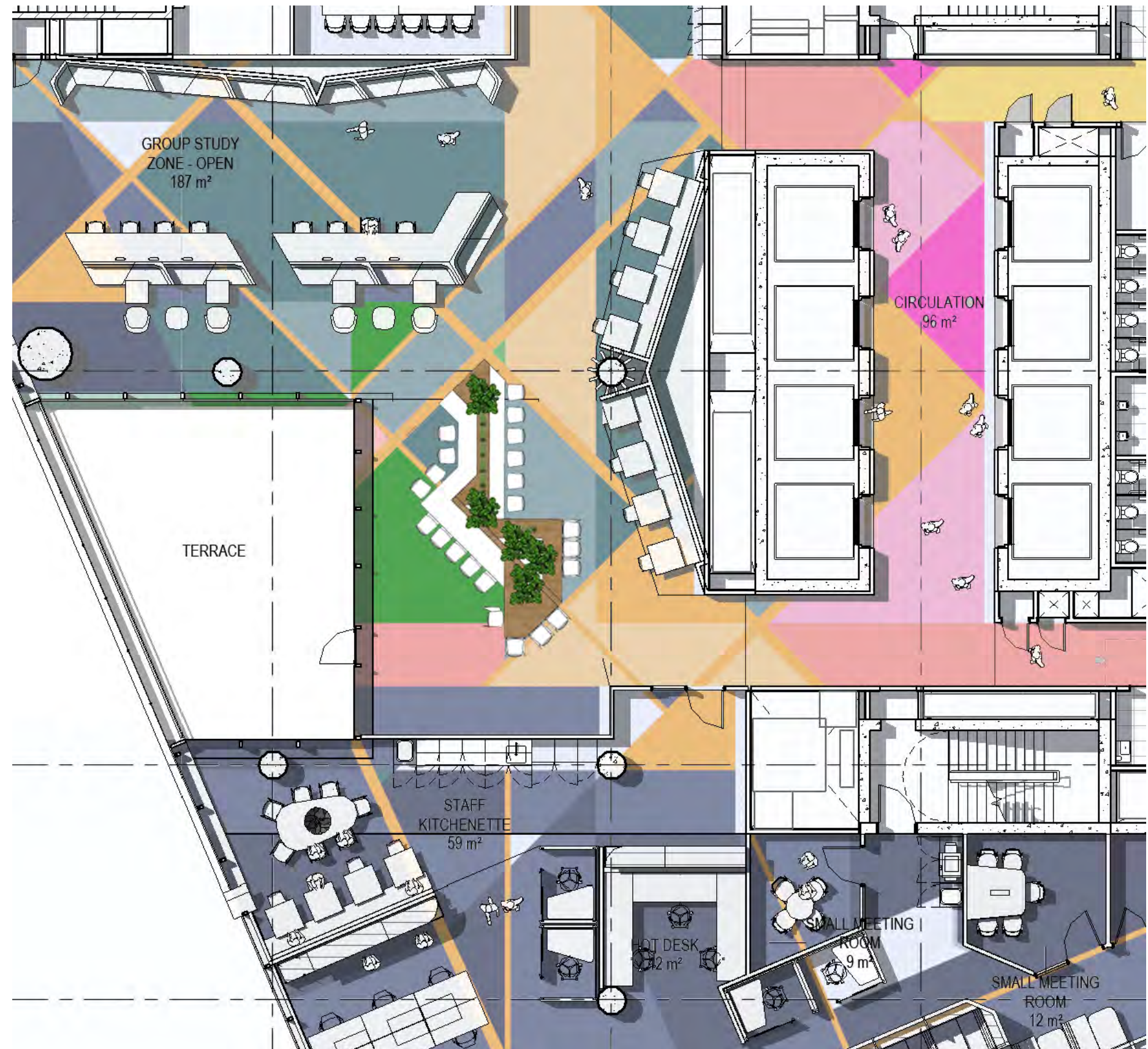
restore connections

### **GROW**

develop new relationships

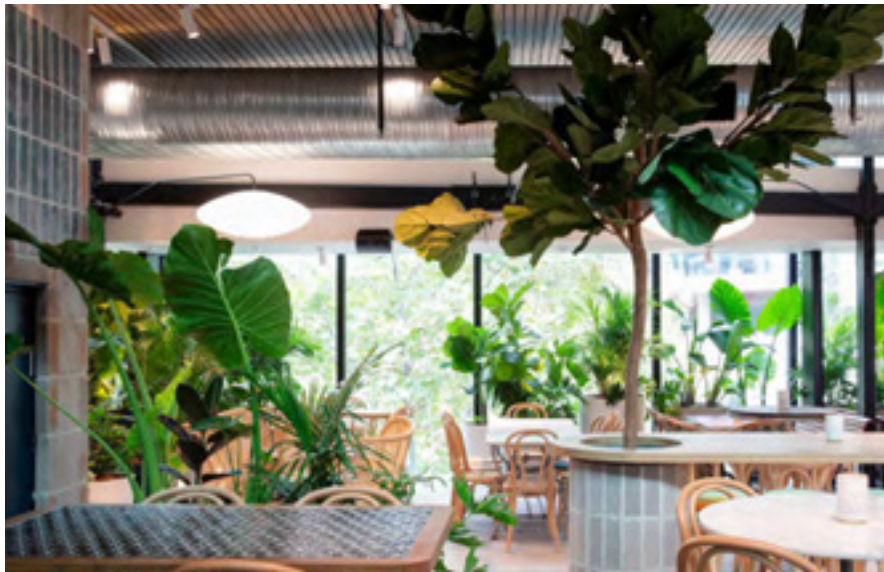
### **LEARN**

meet with others



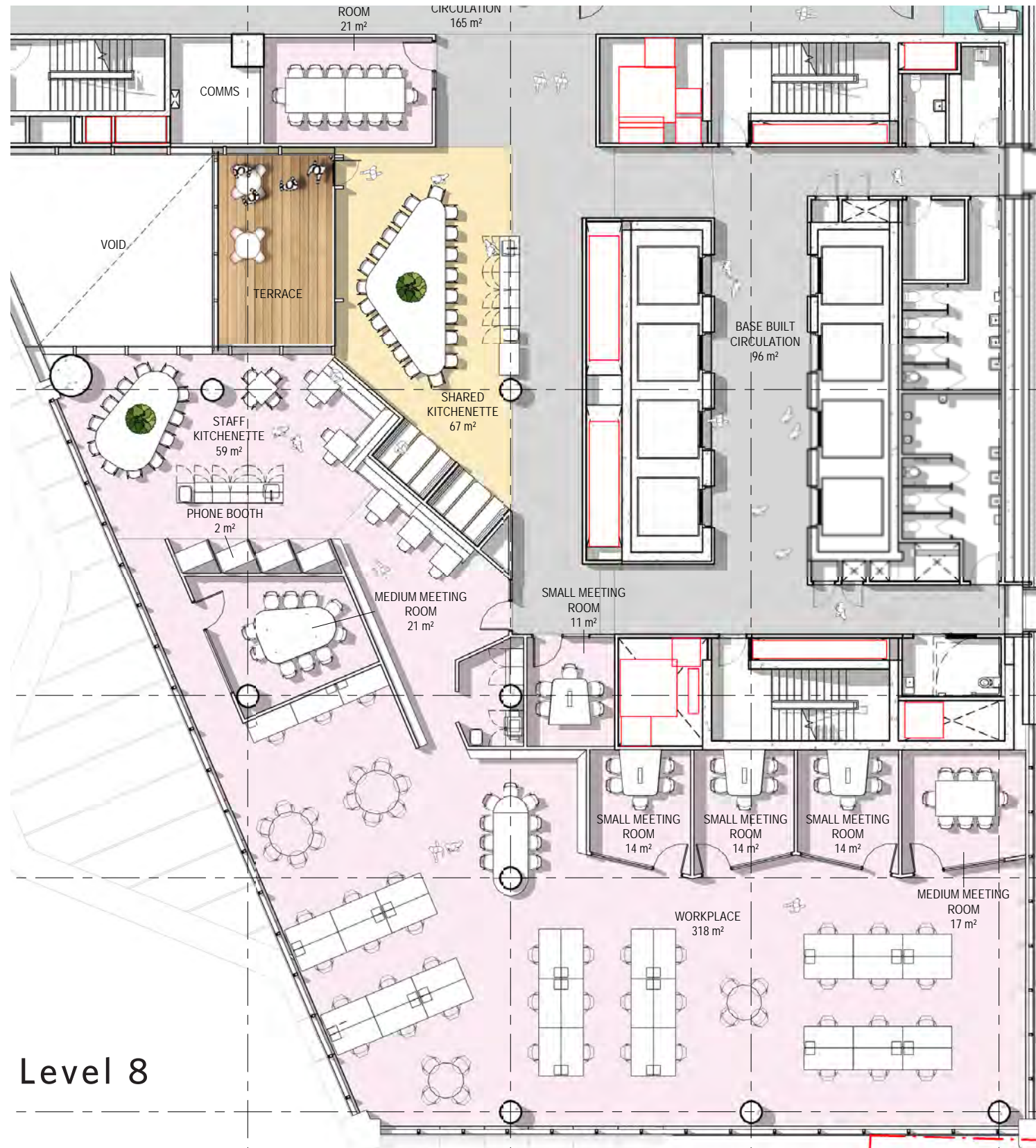


## THE KITCHEN TABLE - 'the connector'

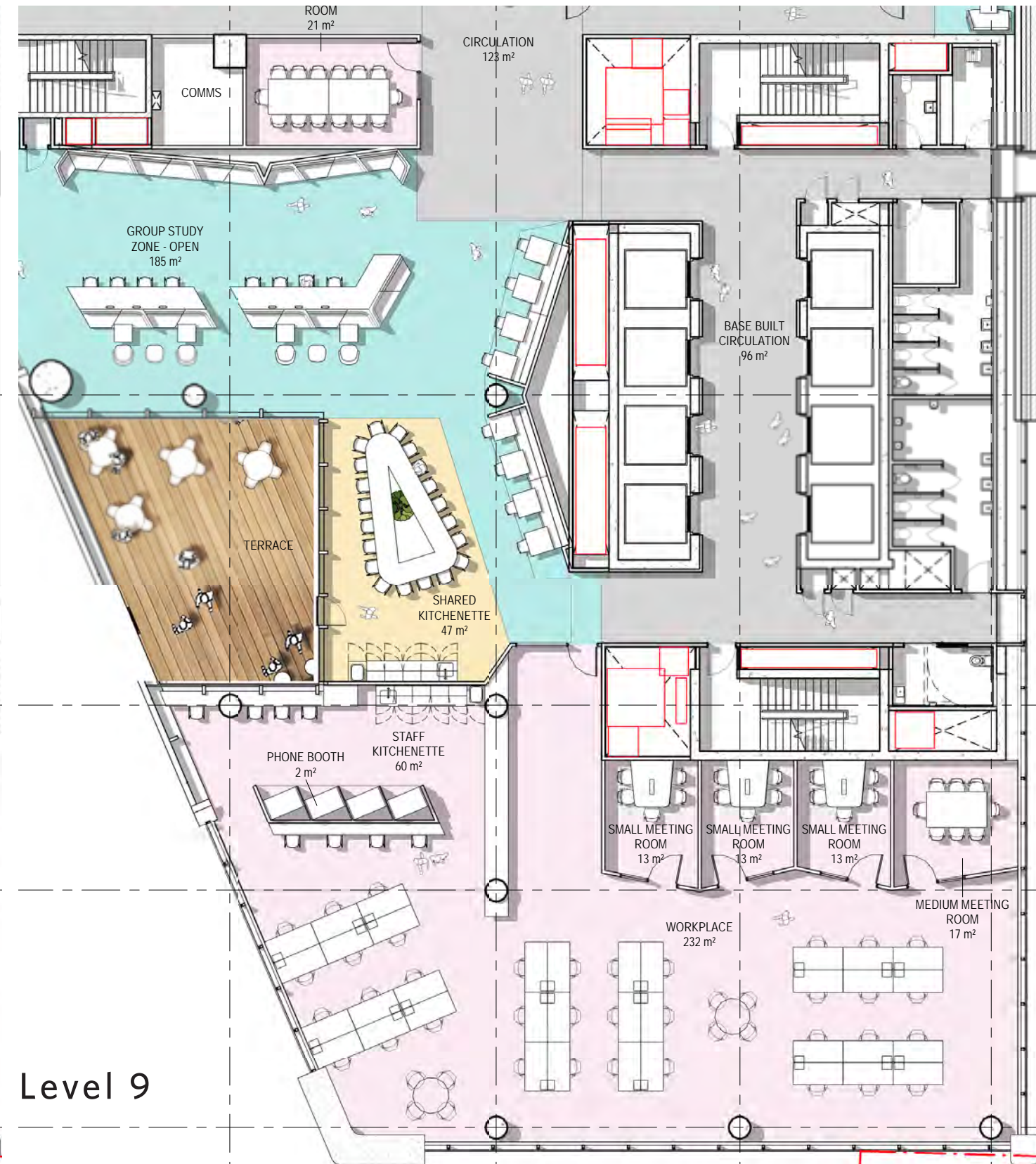




# Typical Workplace - Current



Level 8









Level 9



# Workplace

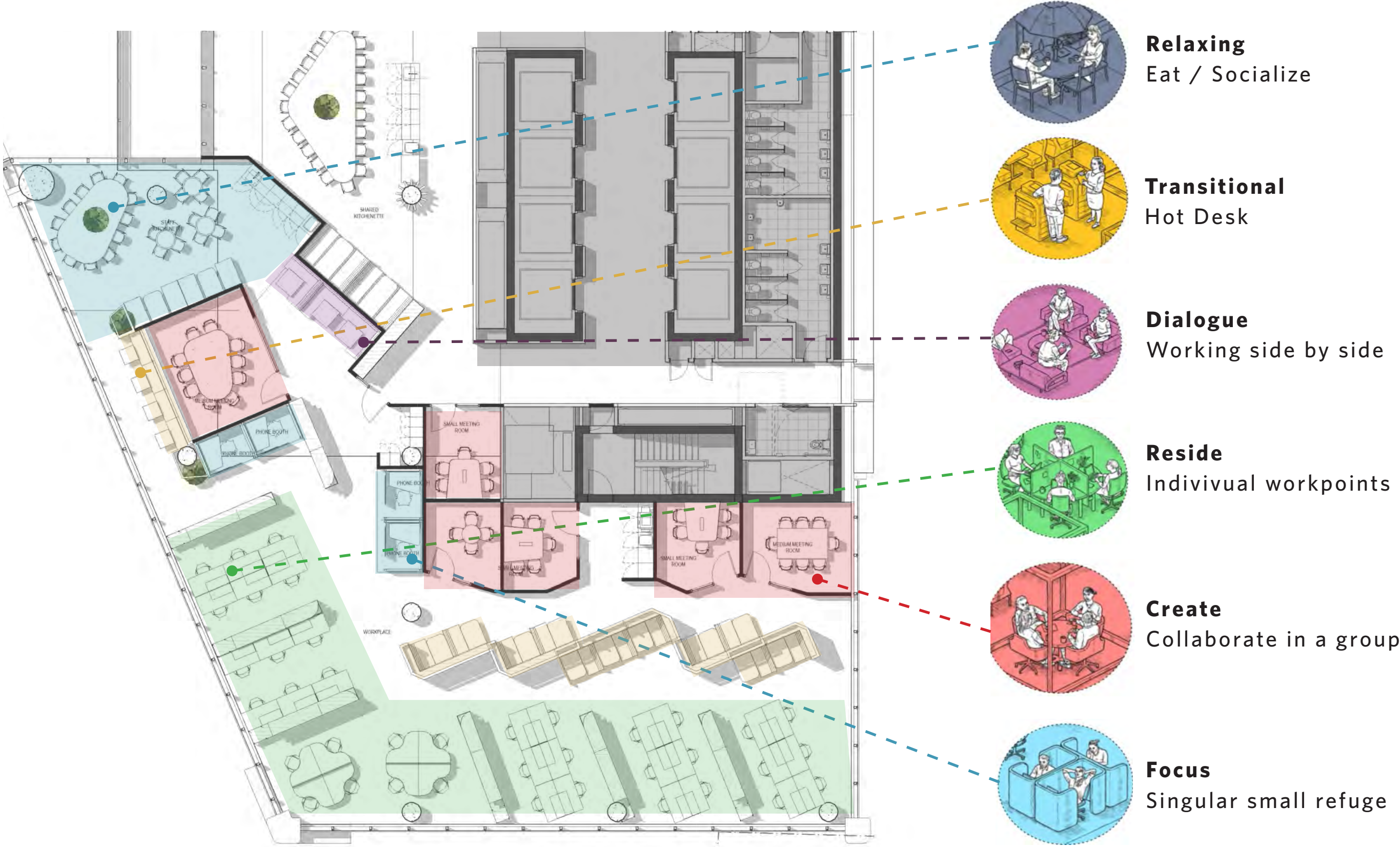
Activity Definitions

Activities			
	<b>Reside</b> - Individual work points where you don't mind brief interruptions to engage with people around you for ad-hoc questions. <b>Examples:</b> emails, general admin, general work		<b>Create</b> - Collaborating in a group to learn, create and interact physically and virtually to enable gatherings for presentations or confidential discussions. <b>Examples:</b> Problem solving, coordination, presentations
	<b>Focus</b> - a singular small refuge in order to focus, reflect or to virtually connect in privacy. <b>Examples:</b> Conference calls, Private Calls, Intensive research/ writing		<b>Transitional</b> - Hotdesk touch downs or inpromtu work points. <b>Examples:</b> Guest academics short term work or write up's
	<b>Dialogue</b> - Close side-by-side working with one or maximum two other people. <b>Examples:</b> Working together on a document or a process, staffing, informal meeting		<b>Relaxing/Socialising</b> - Taking time to disconnect and re-charge. Promotion co-working and exchanges of diverse people. <b>Examples:</b> breaks, lunch, informal chats



# Workplace

Activities Typologies





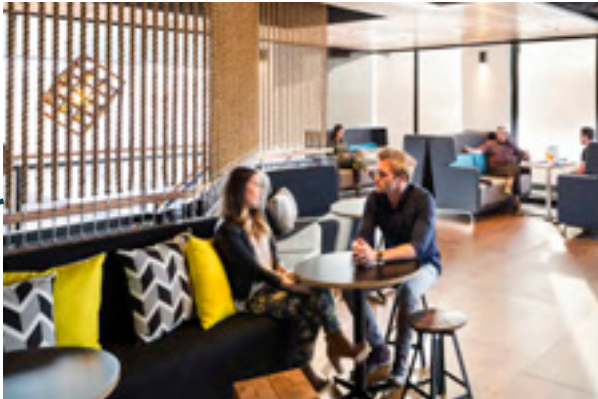
## Workplace Typologies





# Workplace

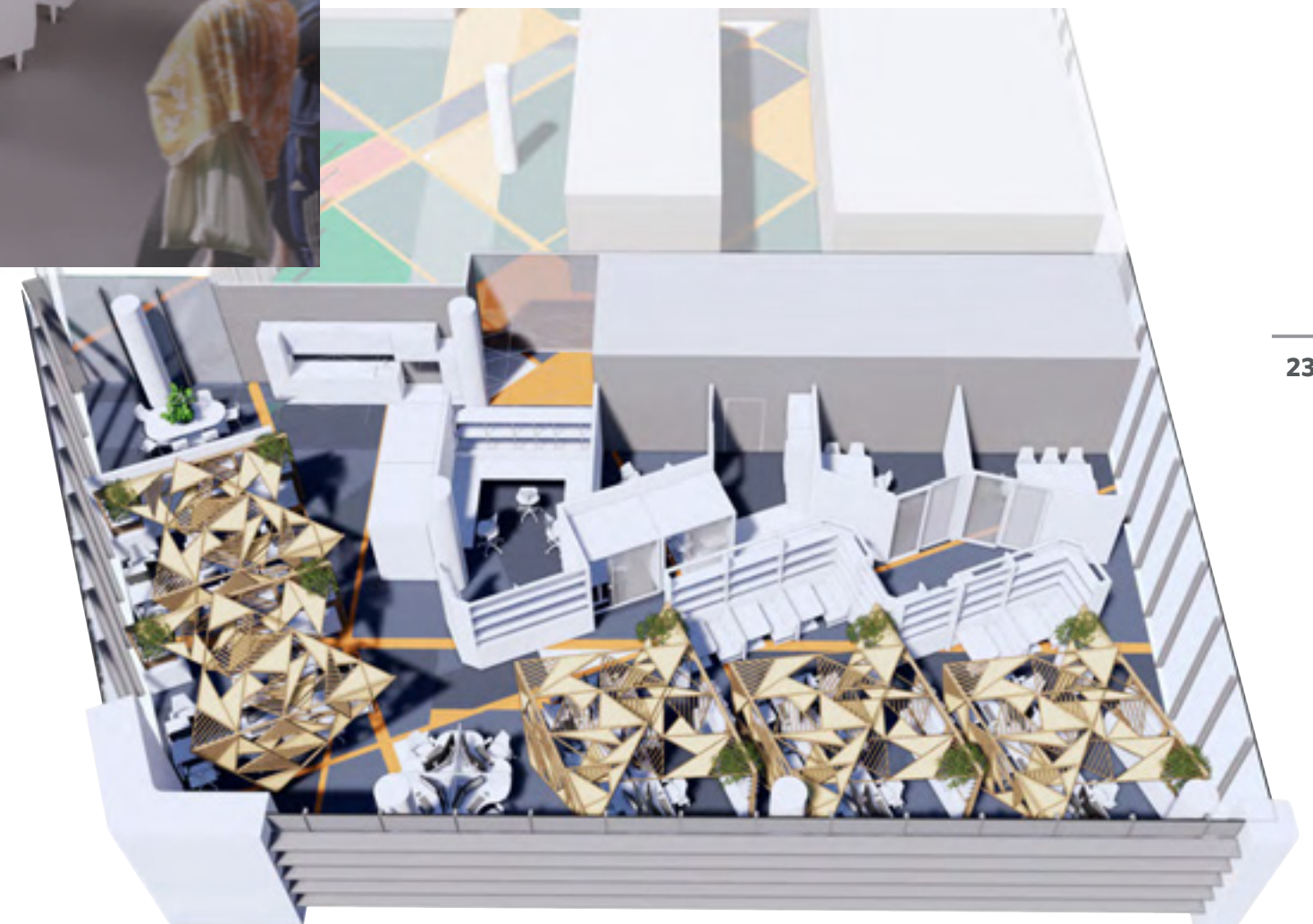
Level 8





# Workplace

The result: The Cabana





# Workplace

The result: The Retreat



**The Rocks**  
Reading space



**The Log**  
Focus work



**The Cocoon**  
Reading Space



**The Hut**  
Meditative -self reflection space



**The Cabins**  
Semi enclosed booth focus work

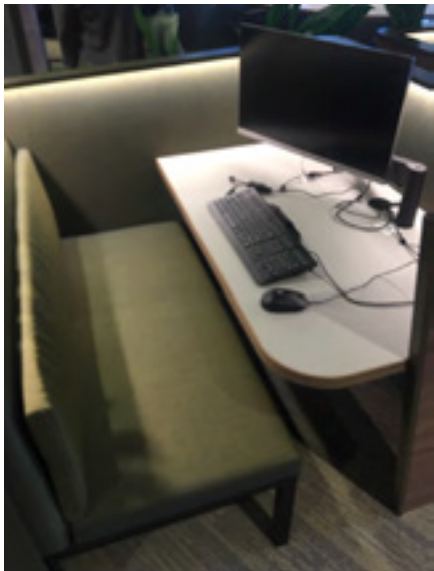




Workplace Level 11 - The Academics / Staff Retreat



The Cabin type 1



The Cabin type 2



The Log - workstation



Rocking Chair



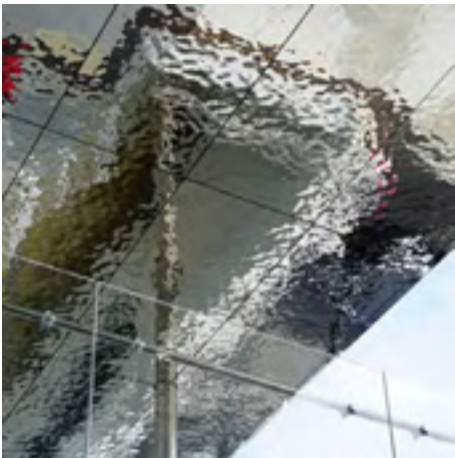
Hut chaise Lounge



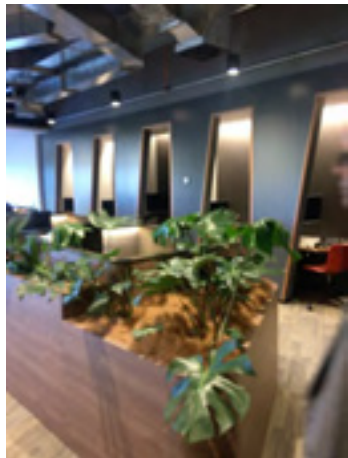
Reading Chair



Quiet nook



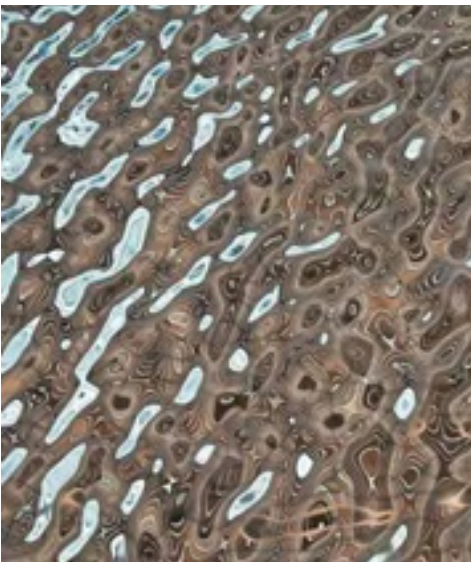
Textured metallic laminate



Plants



Section planks of cedar wood as partition



Mirrored ceiling replicating rippled water



Section planks of cedar wood