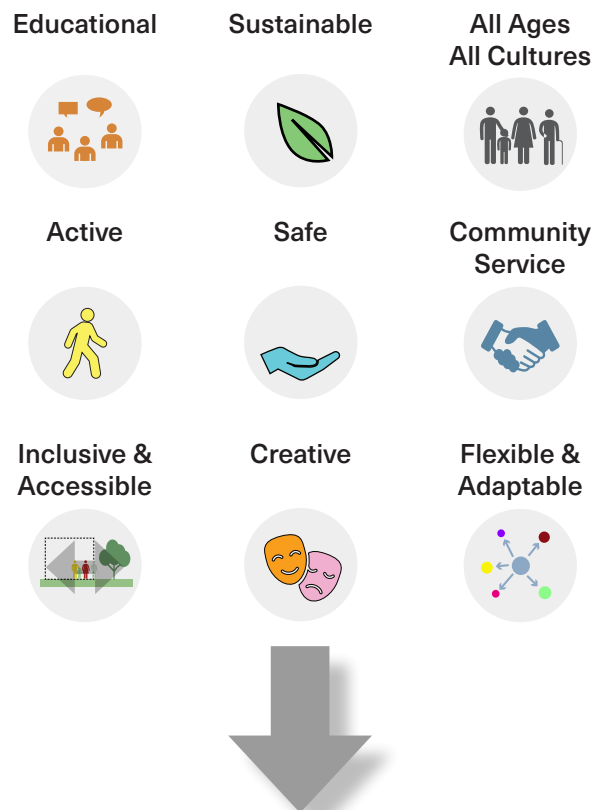


THURINA PARK COMMUNITY CENTRE

CONCEPT DESIGN - SITE CONTEXT

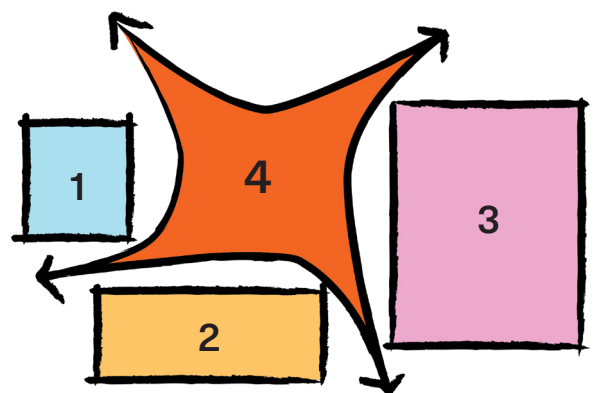
A Place of Inclusion

Canterbury Bankstown Council is currently designing a new community centre for the people of Villawood in Thurina Park. The community centre has the opportunity to offer many benefits to the existing users of the park while also attracting new members of the community to the place. Villawood is a culturally diverse place which at its best represents Australia's unique position as a inclusive multicultural society. The new Thurina Park Community Centre in Villawood represents a significant opportunity to create spaces that have public and cultural relevance beyond simply being a community building.



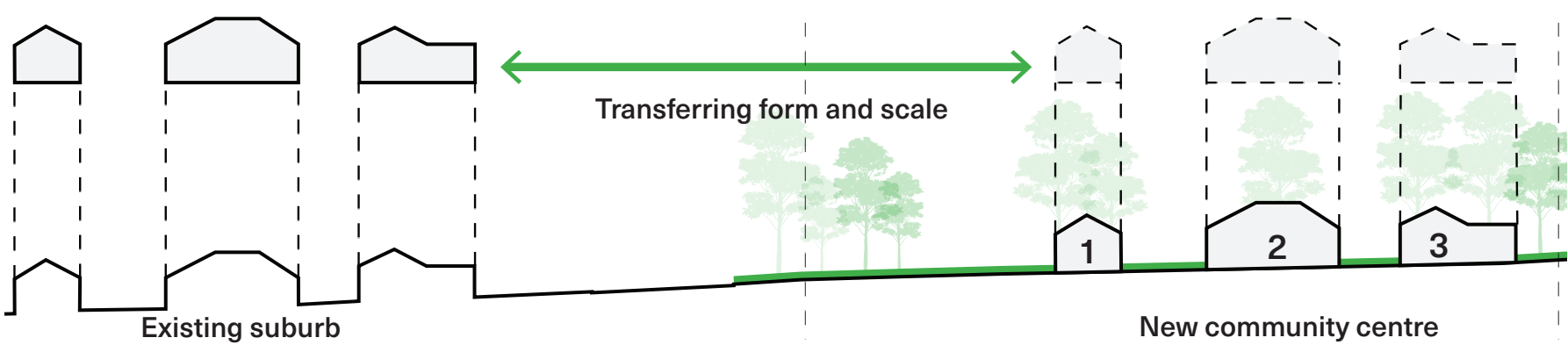
Conceptual Framework

To add value to the project and reduce the scale of any buildings in the park the community centre internal functions are arranged around a new flexible community courtyard, number 4 in the diagram below.



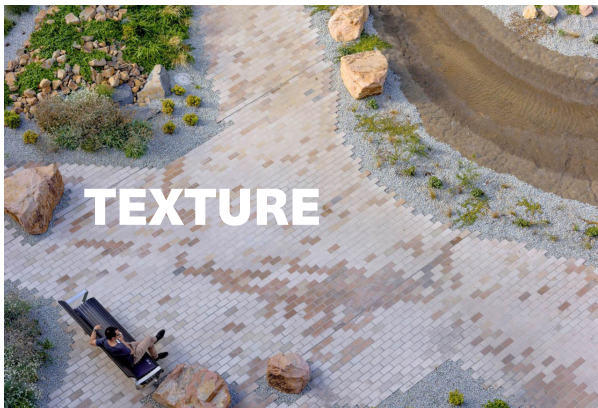
Thurina Park Site Context

The park sits within a suburban context of one to two storey single dwelling homes that front the perimeter of the park along Alcoomie and Lowana Streets. The community centre is located to reduce impact on the park and the surrounding homes by taking advantage of the existing carpark and minimising visual impact within the park and two the surrounding houses. The form and scale of the suburb provide the context for built form to be designed within the park.



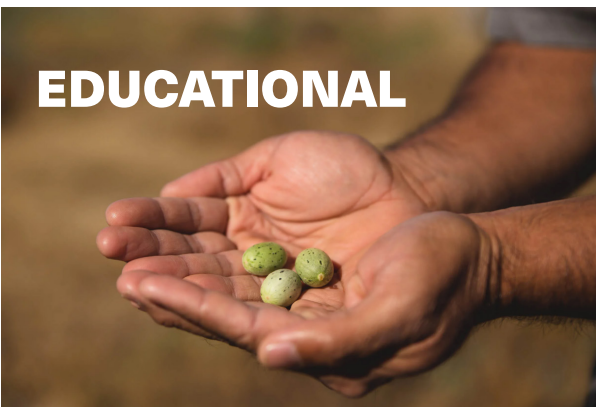
THURINA PARK COMMUNITY CENTRE

CONCEPT DESIGN - LANDSCAPE PLAN



Thurina Park Site - Landscape Plan
The new community centre sits within the existing path network of Thurina Park by maintaining and adding to the movement of the community through the park. The new community courtyard will be a secure yet welcoming space for the community that is flexible and allows the community to actively engage with its development over time. The selection of key new native trees and planting providing an opportunity for the community to provide input on the final design of this space.

- | | | |
|--|--|--|
| 01 Flexible meeting room | 05 New drop off zone and new carpark exit | 09 Paths adjusted to new community centre |
| 02 Potential not for profit office and amenities | 06 Entry forecourt with native garden | 10 Native low level perimeter planting |
| 03 Multipurpose events space with kitchen | 07 Native garden with informal nature play | 11 Existing carpark |
| 04 Flexible community courtyard | 08 Existing trees retained | 12 Possible future elements
Outside the scope of this project |

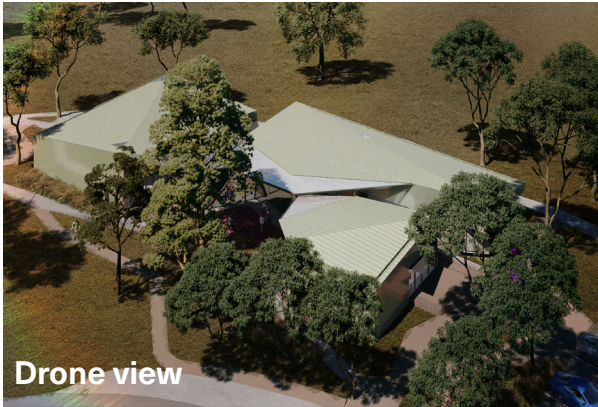


THURINA PARK COMMUNITY CENTRE

CONCEPT DESIGN - FLOOR PLAN



Roof plan



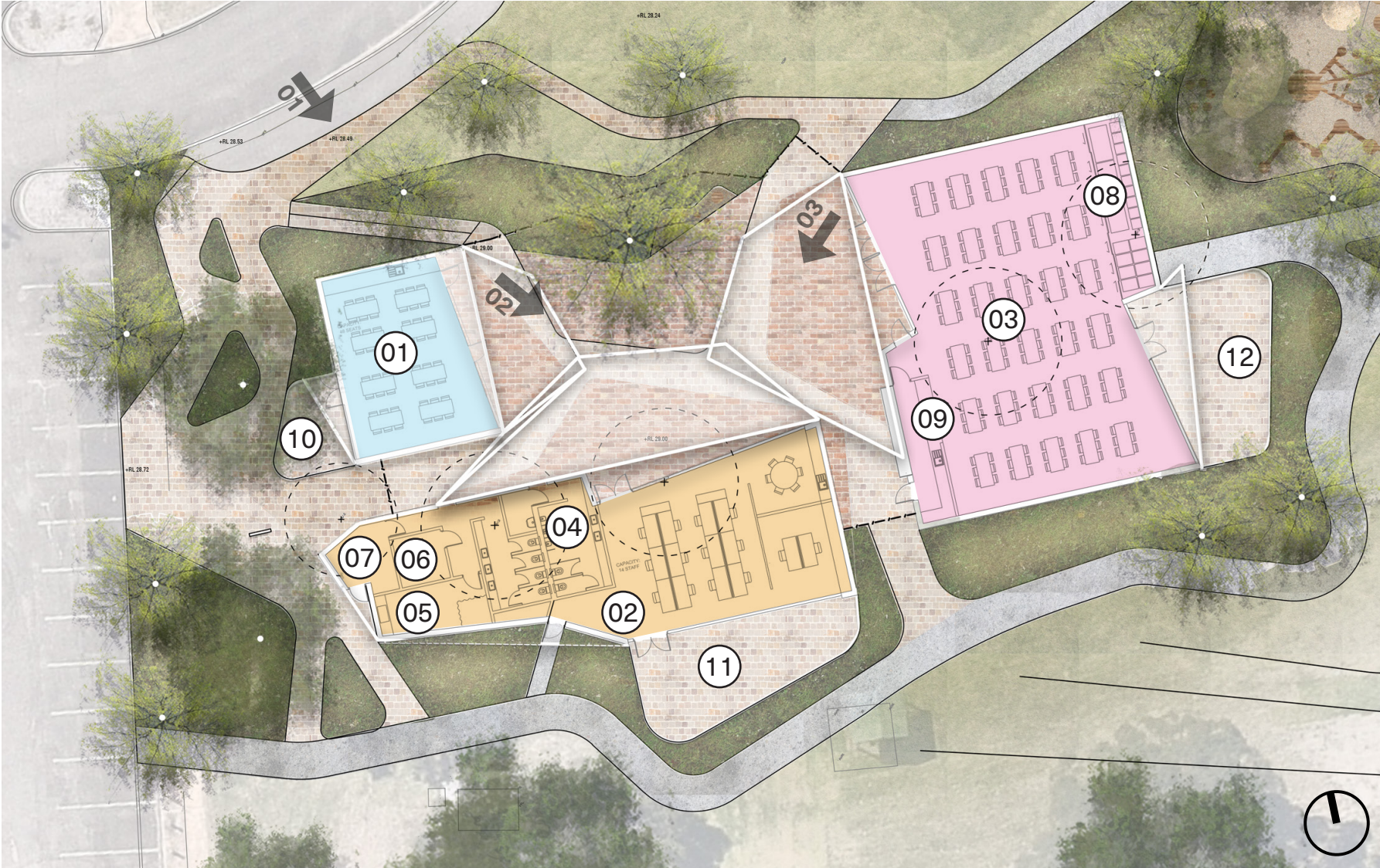
Drone view



View 01-Drop off



View 02-Courtyard



Thurina Park Site - Floor Plan

The three small buildings that contain the functional spaces of the design are located to be directly connected to Thurina Park and create a new community space that sits between the functions. This open and covered courtyard is open to exploration and adaption in terms of uses that the community may wish to see take place, the courtyard can function in conjunction with the internal spaces or independently.

01 Flexible meeting room

05 Parents room

09 Kitchen

02 Potential not for profit office and amenities

06 Equal access WC

10 Meeting room 1 external area

03 Multipurpose events space with kitchen

07 Storage and bin store

11 Potential not for profit office external area

04 Male and Female amenities

08 Table and chair storage

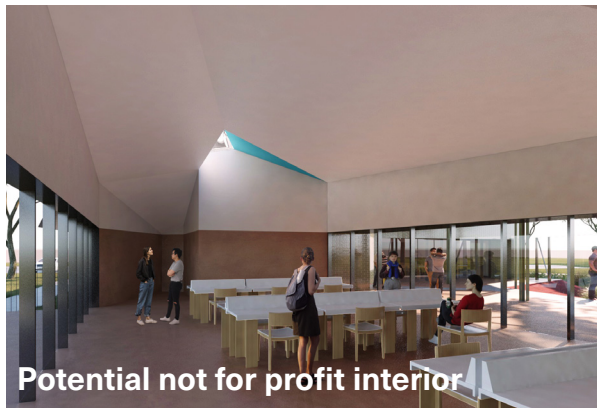
12 Multipurpose hall external area



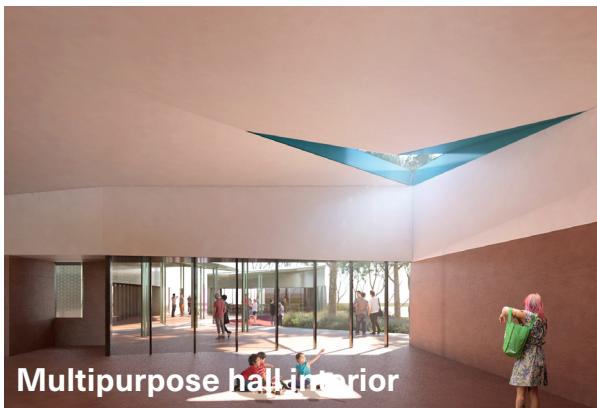
View 03-Courtyard



Meeting room 1 interior



Potential not for profit interior



Multipurpose hall interior

THURINA PARK COMMUNITY CENTRE

CONCEPT DESIGN - DROP OFF VIEW



THURINA PARK COMMUNITY CENTRE

CONCEPT DESIGN - COURTYARD VIEW 01



THURINA PARK COMMUNITY CENTRE

CONCEPT DESIGN - COURTYARD VIEW 02

