



SALT PAN CREEK RESERVE, RIVERWOOD

VISION

4.0 VISION

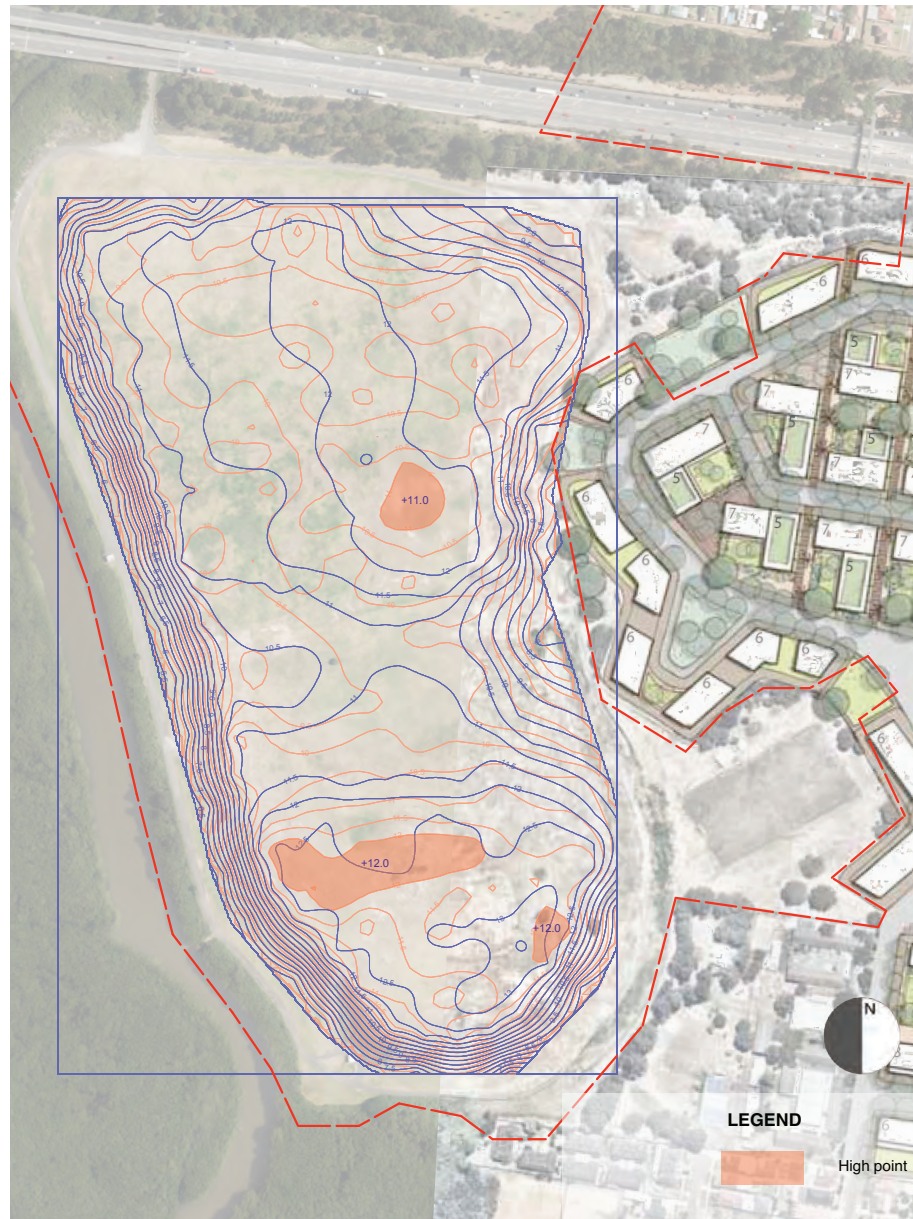
4.1 Project Vision

In consideration of the project objectives as defined by Council and recognising the physical and cultural influences on the site as outlined in previous sections a guiding vision and a series of more detailed design principles has been developed that has informed planning and assisted in evaluation of options.



....a destination parkland providing for multiple recreational uses that engage a broad cross section of community, and that celebrates the Salt Pan Creek location, history and setting...

4.2 Principles



i. WORK WITH THE SITE'S LANDFILL HISTORY

- Recognise the landfill profile as a determining baseline for design
- Implement required leachate and gas management measures
- Maintain necessary access to environmental management infrastructure



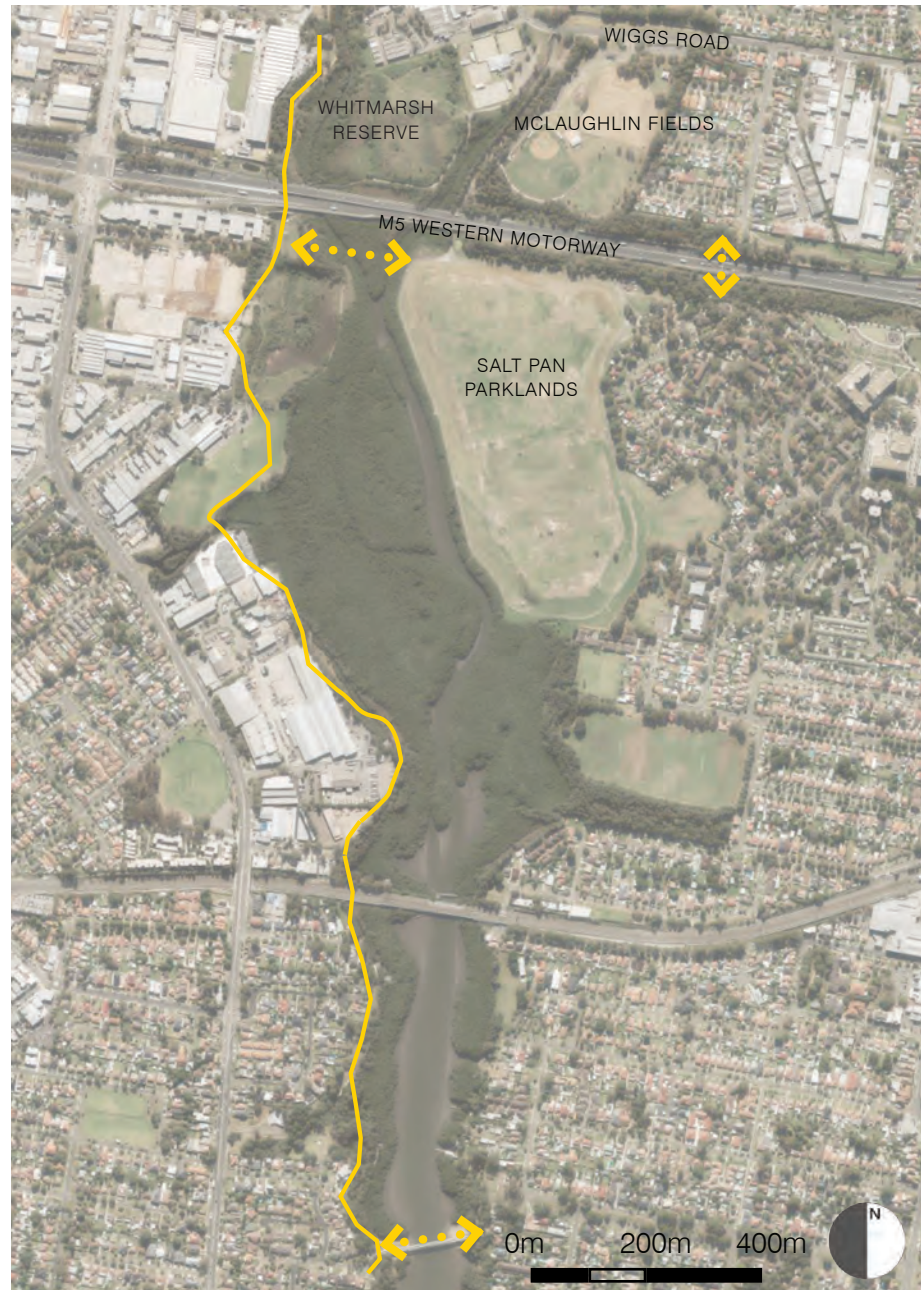
ii. ACTIVATE THE EDGE

- Permeable, comfortable, friendly park edge
- High level of use across day /evening
- Encourage development of appropriate density, orientation, use
- Encourage positive address and access to residential development



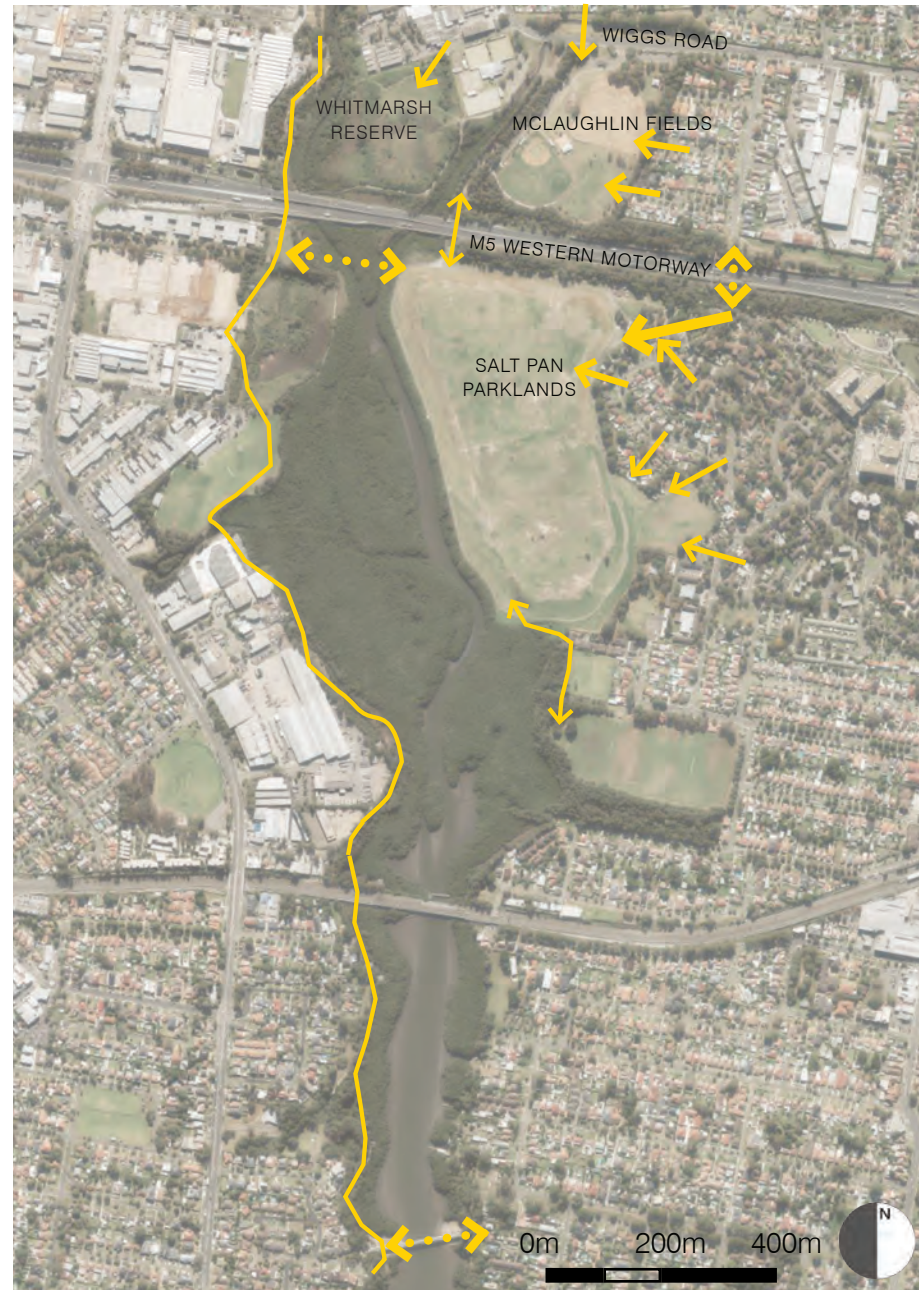
4.0 VISION

4.2 Principles



iii. CONNECT, LOOP AND EXPERIENCE

- Integrate with broader recreational access systems



iii. CONNECT, LOOP AND EXPERIENCE

- Multiple pedestrian entry points to parklands



iii. CONNECT, LOOP AND EXPERIENCE

- Create a diversity of loops and routes
- Link experiences

4.2 Principles



iv. WATER IN THE LANDSCAPE

- Integrate the presence of water beyond Salt Pan Creek to enhance the environment and character of the landscape
- Harvest drainage from surrounding public domain
- Treat in bioremediation (using aquatic planting and sand filter beds to improve water quality) ponds
- Use for field irrigation and other on site uses
- Interpret the former creek line in the park landscape



v. MULTIPLE INTEGRATED RECREATIONAL ROLES

- Regional sports function (football)
- Multi-use district sports function
- Destination family play
- Integrated landscape experiences - topography / water
- Local promenading and exercise
- Temporary / pop-up uses during park evolution

4.0 VISION

4.2 Principles



vi. DISPERSED VEHICULAR ACCESS AND PARKING

- Multi entry / egress points
- Provide flexibility for modal management of through access
- Dispersed parking serving recreational nodes



vii. DEMONSTRATING SUSTAINABILITY

- Solar power generation
- Water collection, treatment and harvesting
- On site nursery / plant propagation during construction