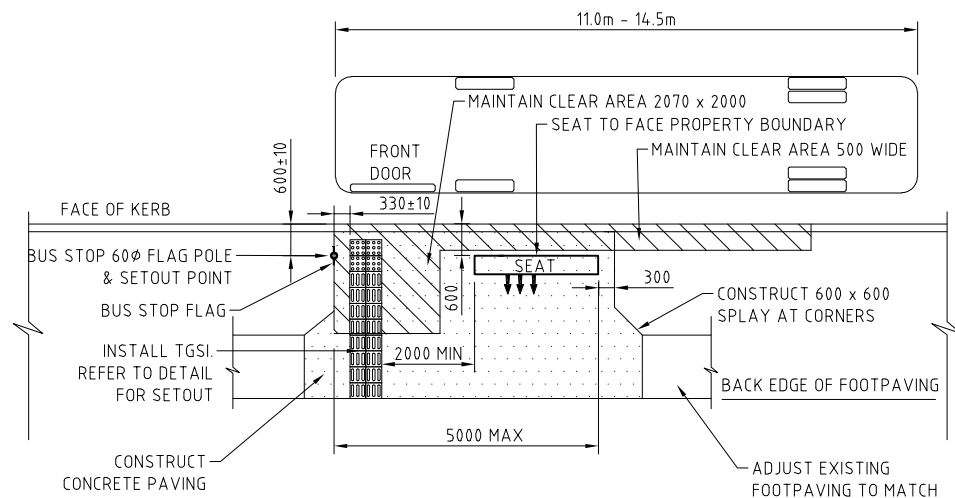


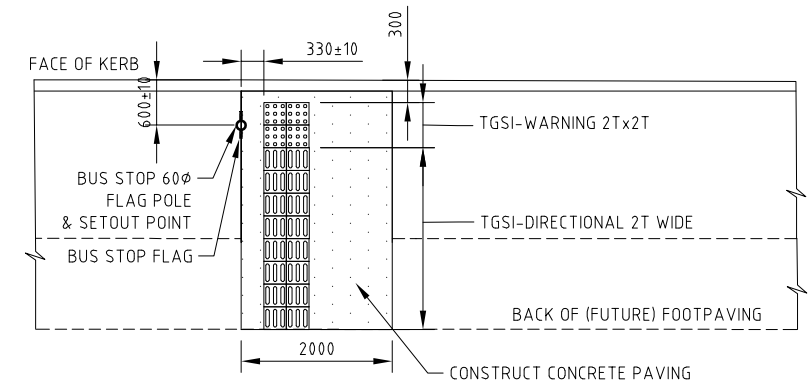
TYPE 1 BUS STOP



TYPE 2 BUS STOP WITH KERB SIDE SEAT

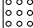


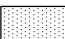
T = 300 OR 400 TO MATCH TGSI TILE SIZE

ALL DIMENSIONS ARE IN MILLIMETRES UNLESS NOTED OTHERWISE



TGSI SETOUT DETAIL AND
TYPE G: BUS STOP IN GRASSED FOOTWAY

NOTES:

1. BUS STOP TO COMPLY WITH "DISABILITY STANDARDS FOR ACCESSIBLE PUBLIC TRANSPORT 2002" AMENDED 2005 UNDER DDA 1992, AUSTRALIAN HUMAN RIGHTS COMMISSION GUIDELINE FOR BUS STOP DEC 2010, AS/NZS 1428.4.1:2009.
2. TACTILE GROUND SURFACE INDICATORS (TGSIs) TO COMPLY WITH AS1428.4.1
 - WARNING TSGI (W)  - DIRECTIONAL TSGI (D)
3. WHERE SURROUNDING PAVEMENT IS "NATURAL" CONCRETE TGSIS ARE TO BE "BLACK" COLOUR WITH LUMINOUS REFLECTANCE VALUE LRV (LF) <9 INSTALLED TO MANUFACTURERS SPECIFICATION. USE 300x300 ESP ACCESS TSGI TILES, CHELMSTONE VOODOO, OR APPROVED EQUIVALENT. CERAMIC OR FLEXIBLE "STICK ON" TILES ARE NOT TO BE USED. PROPOSED TSGI TILES SAMPLE MUST BE SUBMITTED WITH ITS SPECIFICATION FOR APPROVAL BY COUNCIL.
4. COUNCIL WILL SPECIFY THE TYPE, SIZE, AND COLOUR OF TGSIS WHERE SURROUNDING PAVEMENT IS NOT NATURAL CONCRETE.
5.  DESIGNATED CLEAR AREAS FOR BOARDING AND ALIGHTING ARE TO BE FREE OF FIXED OBSTACLES.
6. 500mm WIDE DESIRABLE CLEAR AREA IS TO BE MAINTAINED ADJOINING THE KERB FACE TO ALLOW FOR OVERHANG OF THE BUS AND ITS MIRRORS. 300mm MIN CLEARANCE FROM KERB TO BUS STOP SIGNS AND POWER POLES WITH BUS STOP SIGNS IS REQUIRED.
7.  CONSTRUCT CONCRETE PAVING 125mm THICK WITH SL72 STEEL FABRIC WITH BROOM FINISH ON 100mm DGS20 ROAD BASE COMPACTED TO 98% STANDARD. PROVIDE 100MM THICK CONCRETE UNDER CONCRETE TGSIS.
8. PROVIDE 1.0% - 2.5% CROSSFALL TO PAVEMENT (1.35m DEEP x 2m WIDE) AT FRONT DOOR ALIGHTING AREA TO ALLOW FOR WHEELCHAIR STANDING. 1.0% CROSSFALL IS DESIRABLE.
9. CONSTRUCT 1.2m MIN. WIDE FOOTPAVING TO CONNECT TO EXISTING FOOTPAVING OR KERB RAMP AS REQUIRED.
10. SEAT TO FACE AWAY FROM KERB AS SHOWN. SEAT TO BE POST MOUNTED WITH BACKREST & DDA COMPLIANT ARMRESTS, SEAT HEIGHT 450mm, WIDTH 580, LENGTH 1800mm MIN. ARMREST HEIGHT 650mm EXTENDING TO FRONT OF SEAT, ALUMINIUM POWDER COAT WOODGRAIN SLATS. SEAT TYPE: STODDART TOWN & PARK SEAT SSE, STREET FURNITURE CLASSIC PLAZA SEAT CMP1, BOTTON & GARDINER URBAN POST SEAT AS1428.2, OR APPROVED EQUIVALENT. PROVIDE N25 CONCRETE FOOTING UNDER SEAT 250 THICK X 750 WIDE X SEAT LENGTH + 300 WITH SL82 MESH TOP AND BOTTOM.
11. LIGHTING OF THE BUS STOP IF PROVIDED IS TO COMPLY WITH THE REQUIREMENTS OF THE "PUBLIC LIGHTING CODE AS/NZS 1158."



CITY OF CANTERBURY BANKSTOWN

STD DWG N°

STANDARD BUS STOP TYPES 1, 2 & G: FRONT DOOR ACCESS

S-017

Sheet N°:	Revision:
1	21/09/2021

LAYOUT DETAILS

S-017.DWG